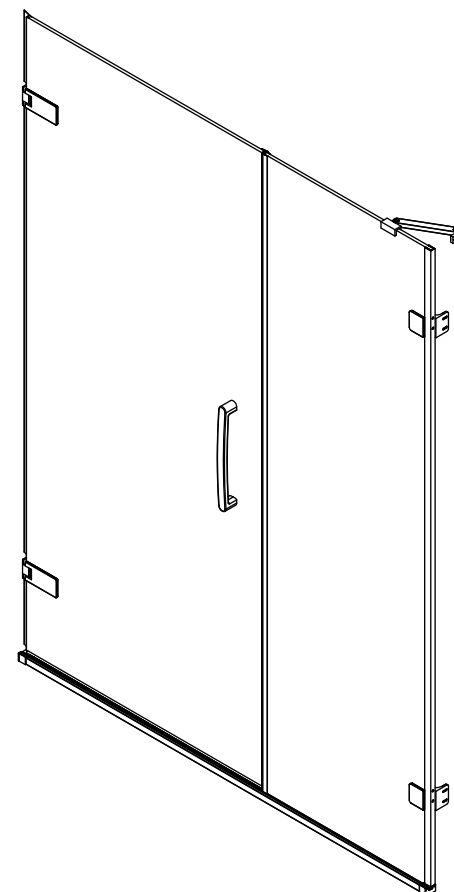


Wall Hinge Door & Inline Panel-Recess



INSTALLATION GUIDE

www.merlynshowering.com

MERLYN

Merlyn Showering
Unit 8, Purcellsinch Industrial Park,
Dublin Road, Kilkenny, Ireland.
Tel: 00353 56 779 1555
Fax: 00353 56 779 1576
www.merlynshowering.com

IMPORTANT: Please read the complete instructions before commencing fitting.

Make sure the tray is 100% level in all directions.

Check that you have the tools required.□

Check the installation site is compatible with the sizes of door supplied.□

Check all the enclosure components are present.□

Check the installation kit is complete.□

Do Not attempt to install the product unless you can tick all 4 boxes satisfactory.

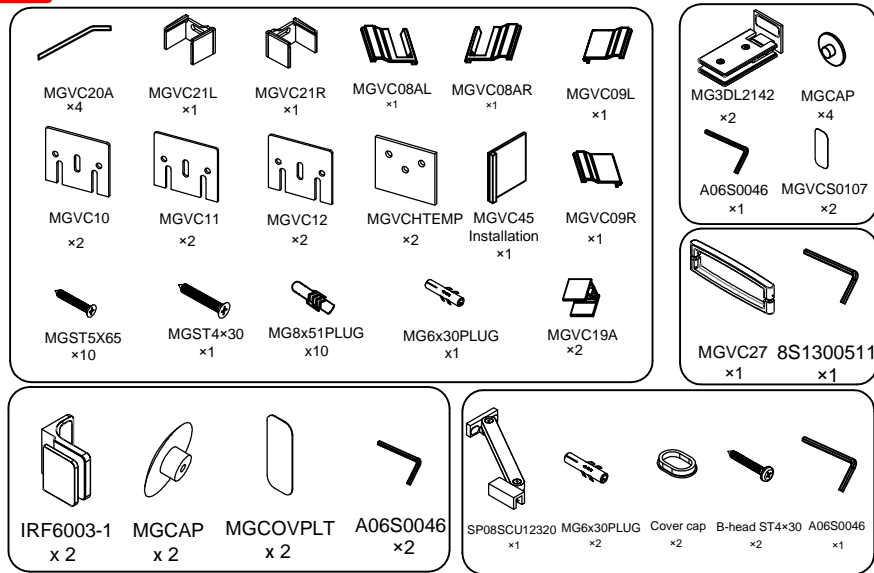
The wall plugs supplied with the installation kit are for use in solid walls. Hollow or 'stud partition' walls will require alternative fixings. Please consult a hardware supplier for the correct type.

ATTENTION: TAKE EXTREME CARE WHEN HANDLING GLASS, WEAR PROTECTIVE EYEWEAR AND CLOTHING. DO NOT LEAVE THE GLASS ON HARD SURFACES AND AVOID CONTACT BETWEEN THE GLASS EDGES AND HARD SURFACES OR IMPACTS DURING THE INSTALLATION.

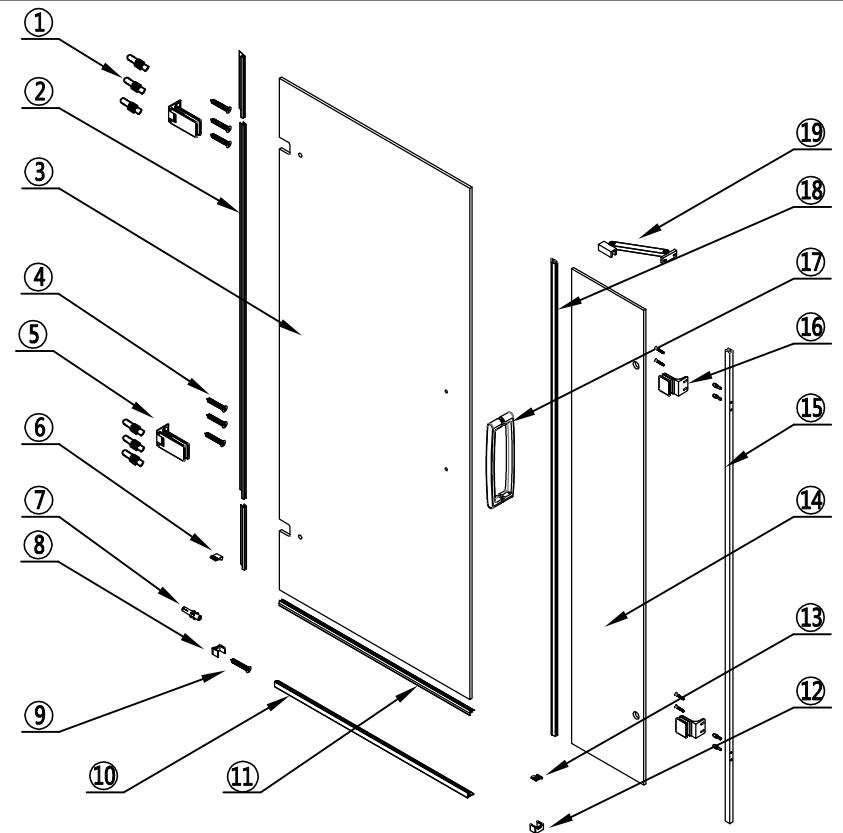
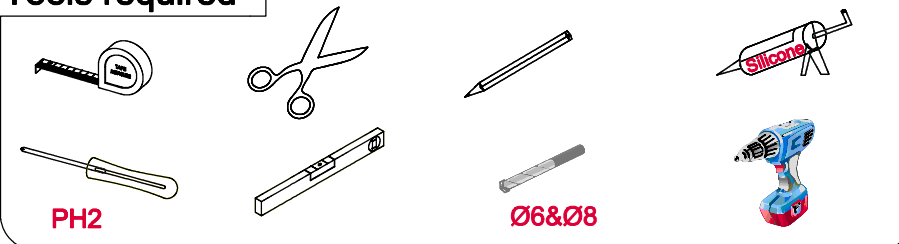
Fixing kit components



Note: Extra components have been supplied to make this product suitable for left or right hand configuration and therefore some parts will be surplus to requirements.



Tools required

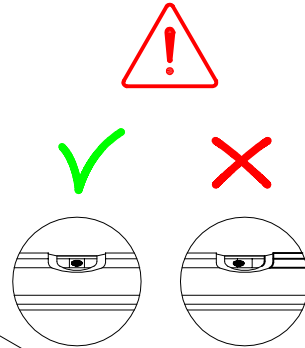
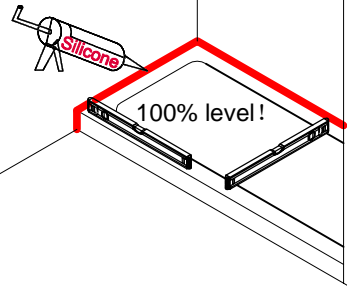


No.	QTY	Descriptions	Part No.	No.	QTY	Descriptions	Part No.
①	10	Wall plug 8x51	MG8x51PLUG	⑪	1	Bottom water seal	MGVC30A
②	1	Upright water seal set left/right	MGVC32LSET/RSET	⑫	1	Bottom bracket right/left	MGVC21R/L
③	1	Door panel	GMGDP	⑬	1	Cover cap of bottom bracket right/left	MGVC08AR/L
④	10	Screw 5x65	MGST5X65	⑭	1	Inline Panel	GMGCPD
⑤	2	Hinge	MG3DL2142	⑮	1	Wall profile	MGVCWPSET
⑥	1	Cover cap of bottom bracket left/right	MGVC09L/R	⑯	2	Wall to Glass Bracket	IRF6003-1
⑦	1	Wall plug 6x30	MG6x30PLUG	⑰	1	Handle	MGVC27
⑧	1	Bottom bracket left/right	MGVC21L/R	⑱	1	90° bubble seal	MGVC33A
⑨	1	Screw 4x30	MGST4x30			Angled Stabilising Bar-350mm-wall to glass	SP08SCU12320
⑩	1	Bottom track	GHKA				

Step 1

IMPORTANT!

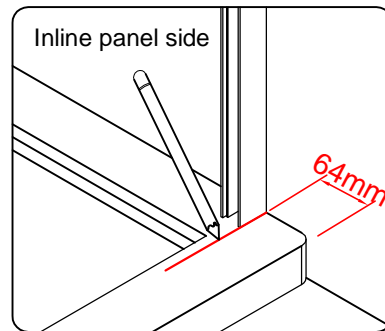
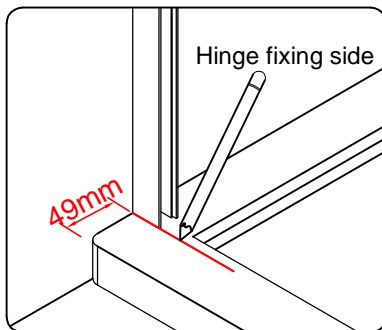
Whether fitting on a tray or on a tiled Wetroom the tray or floor must be 100% level !



Step 2 **WARNING !** Note the wall profile is used as a template to mark the hinge hole positions and the step in distance for template is different for marking hinged panel and inline panel positions. For hinges step in is 49mm and inline panel bracket step in is 64mm. Make sure you note the handing before you proceed.

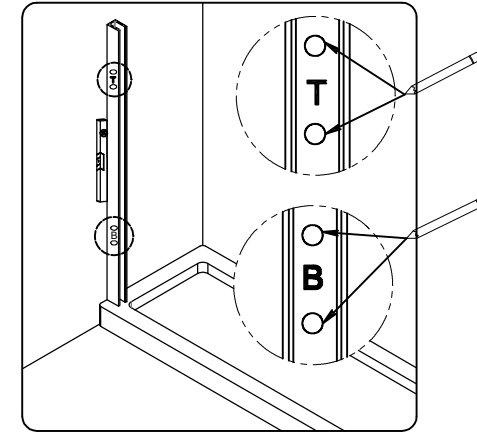


For the door side mark a line inwards 49mm from outside edge of tray. For inline side mark a line 64mm from the outside of the tray.

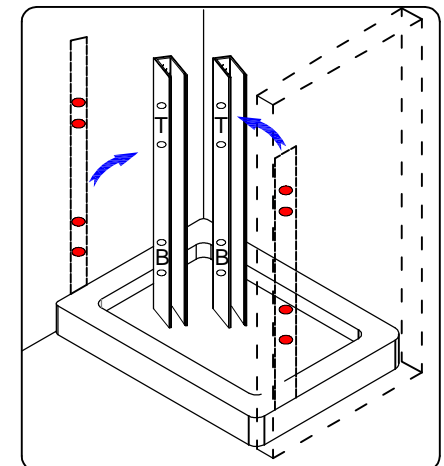
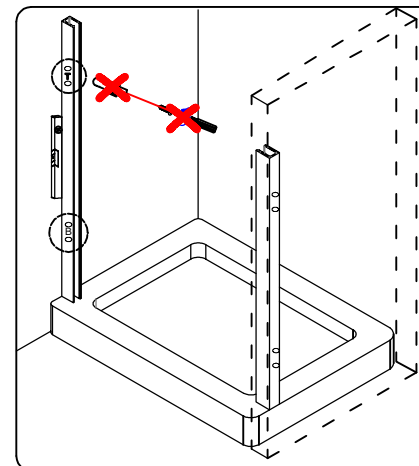


Step 3

Note the position of the labels on the wall profile. Make sure Label 'T' is to the top and 'B' is to the bottom. Line up the outside edge of the profile with the mark and plumb vertical. Mark the wall through the pre-drilled holes.




NOTE: Do not fix wall profile as these are the fixing points for the wall brackets.

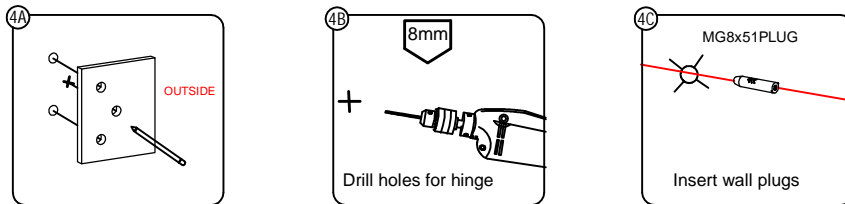


Step 4

Hinged side only ! Remove profile. Take the plastic template and line it up with each set of marks. Mark the third hole.

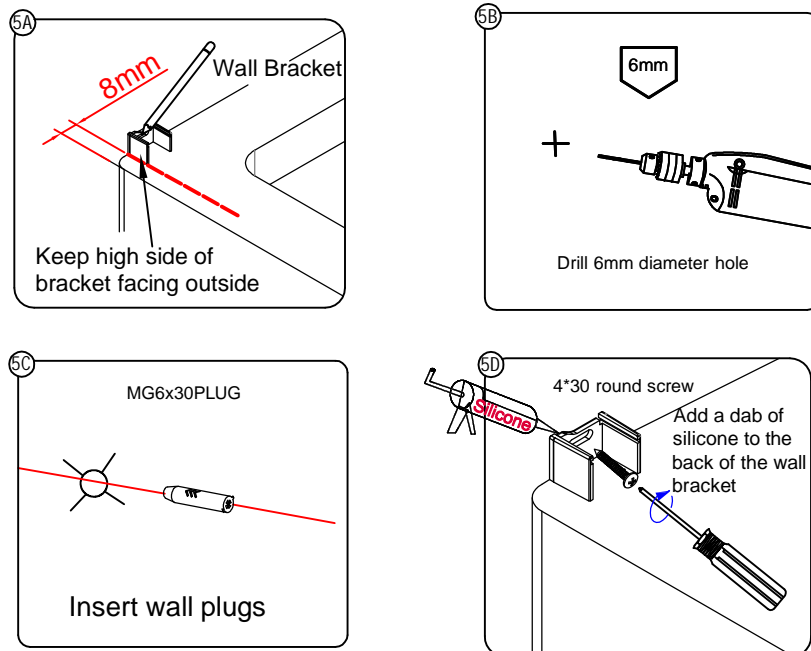
Note: Make sure the third hole for each hinge is marked towards the outside of the enclosure. Drill holes for the hinge with 8mm masonry bit and insert wall plugs. Ensure wall plugs are flush with the wall. 

For Inline panel do not use plastic template, drill only the holes marked using U profile.



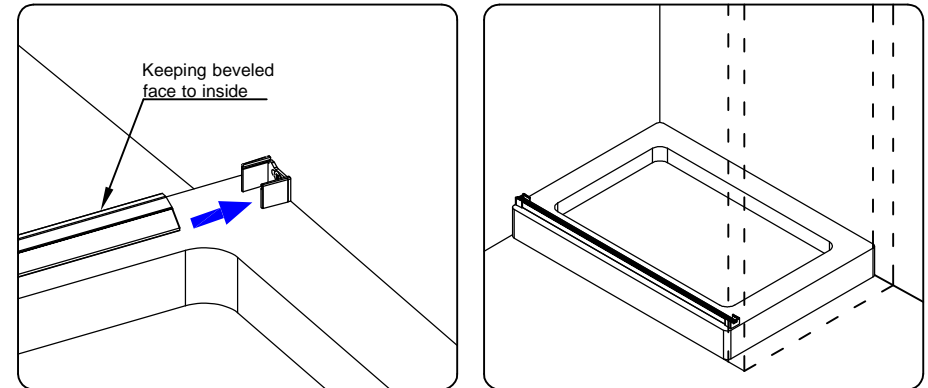
Step 5

Position brackets 8mm inwards from edge of tray. Mark wall through slot. Drill 6mm diameter hole centre of slot and fix brackets. Add a dab of silicone to the back of the wall bracket and fix with 4x30 screws.



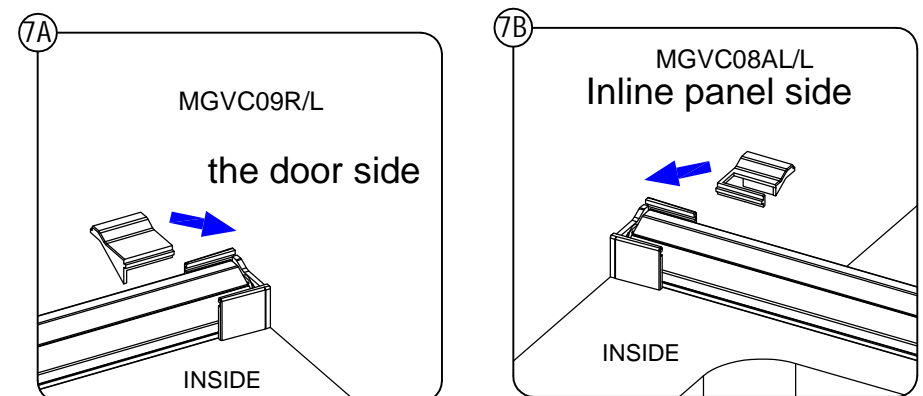
Step 6

Insert track into brackets keeping beveled face to inside.



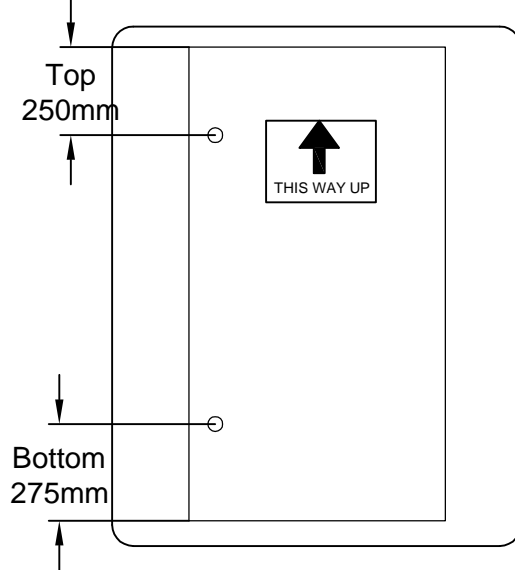
Step 7

Slide caps into position. To the door side fit cap shown in 7A, for the fixed panel side use cap shown in 7B.



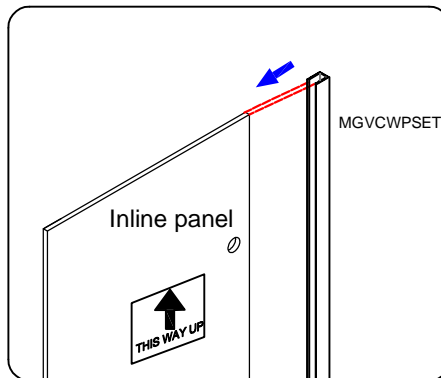
Step 8

Before assembling the brackets to the fixed panel make sure it is orientated the correct way. Measure hole centres from top and bottom to determine correct orientation of panel.



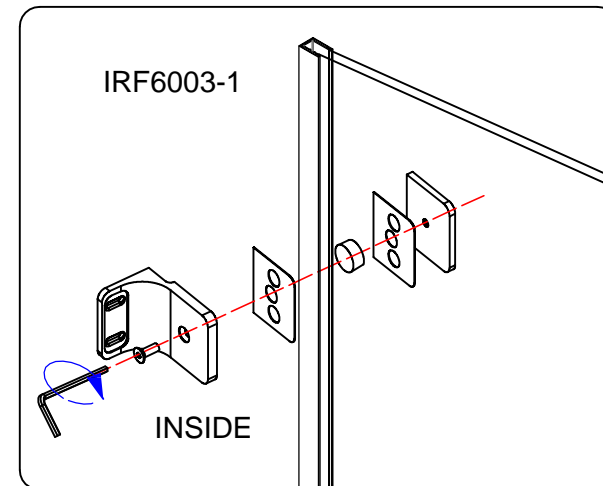
Step 9

Push on wall profile completely ensuring end is flush with the top of the Inline panel.



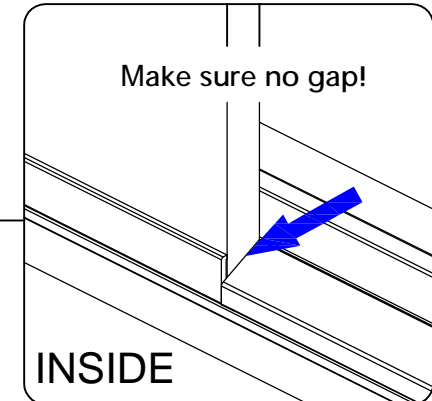
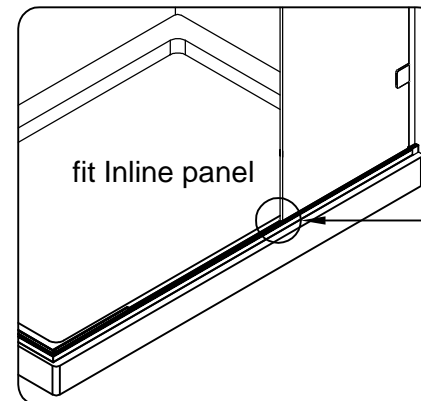
Step 10

Fix wall brackets loosely ensuring fixing holes are to the inside of Inline panel.



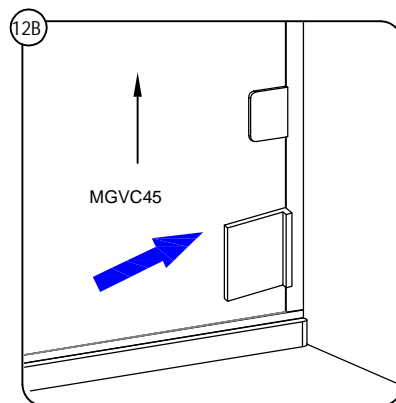
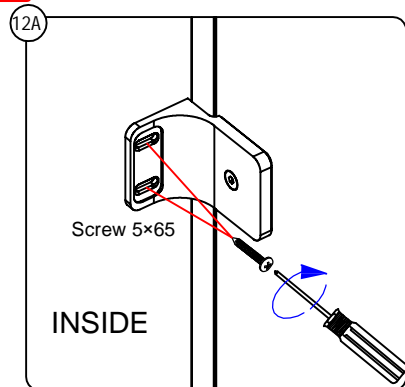
Step 11

Take Inline panel and insert into bottom track keeping outside edge of Inline panel tight to end of angled profile in bottom track. Make sure there is no gap between the edge of the glass and the angled profile.



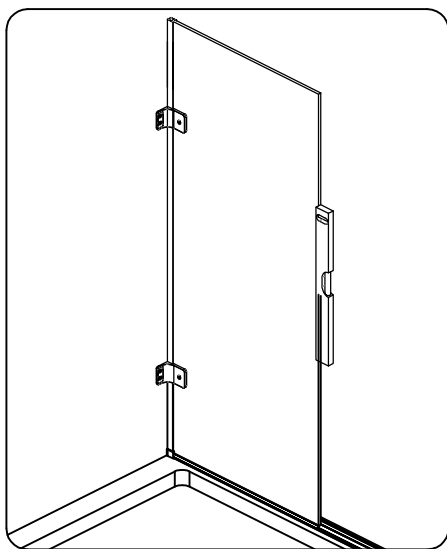
Step 12

Fix wall brackets to the pre drilled holes. Do not fully tighten, leave enough slack for adjustment. Secure top bracket first.
Note: Hold glass panel and gently tap profile back tight against wall using MDF tool provided, working from bottom to top.



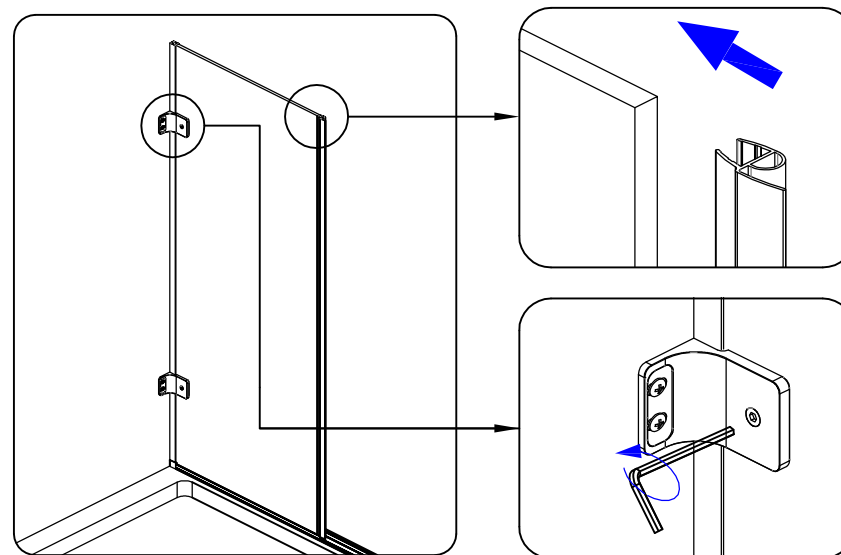
Step 13

Check panel for level and fully tighten screws to wall. Repeat step 12.



Step 14

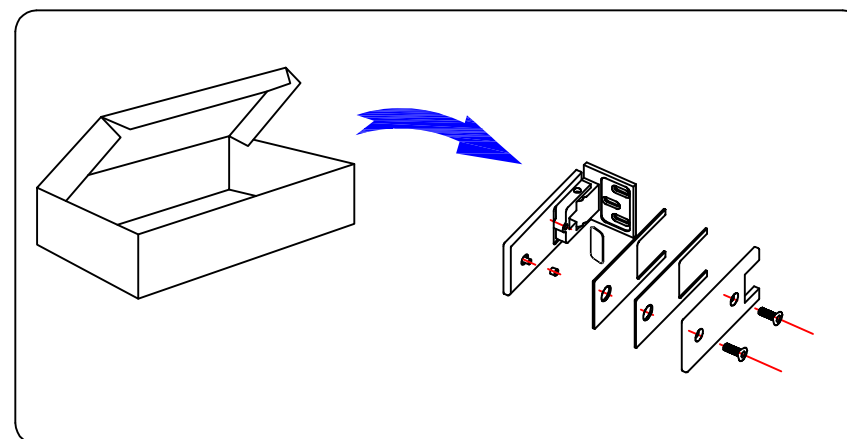
Fit vertical closing seal to the Inline panel. Make sure the fin is on the inside. Do not fully tighten bracket to glass, leave enough slack for adjustment.



Step 15

Please note: Door panel is reversible for left or right handing !

Remove hinge back plate and gasket.



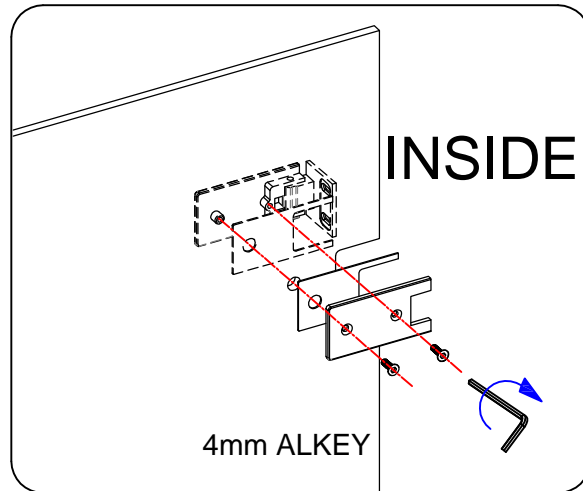
Step 16

Fit hinge to door keeping removable hinge plate to inside of door.

Tip: Use MDF tool for squaring hinges.

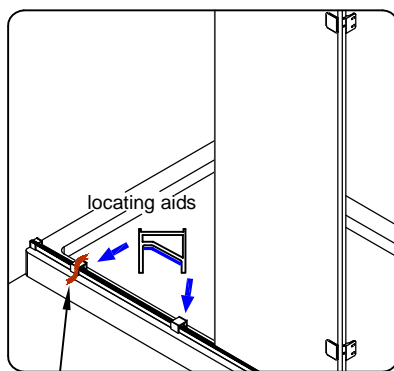


Please note: Place screws and screwdriver inside enclosure as door is fixed from the inside.

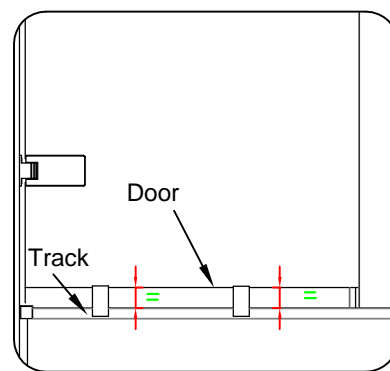


Step 17

Place locating aids on threshold, one each side of opening.

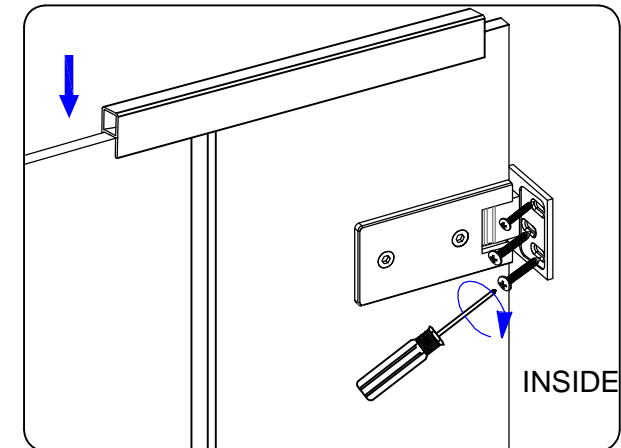


Tip! Hold both locating aids in position with masking tape.



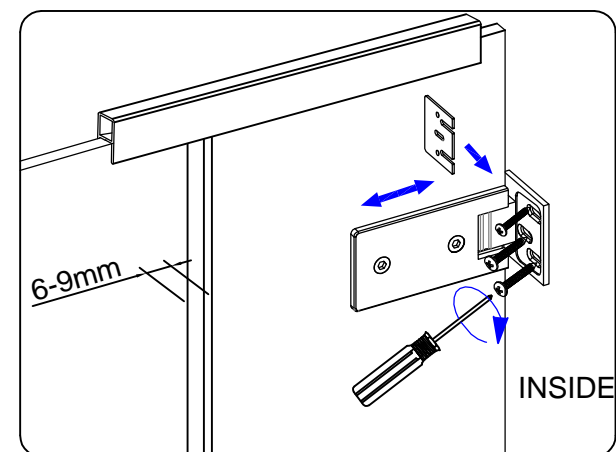
Step 18

Lift door onto positioning aids. Secure the moving panel in place with the door holding seal SP010SP281000.



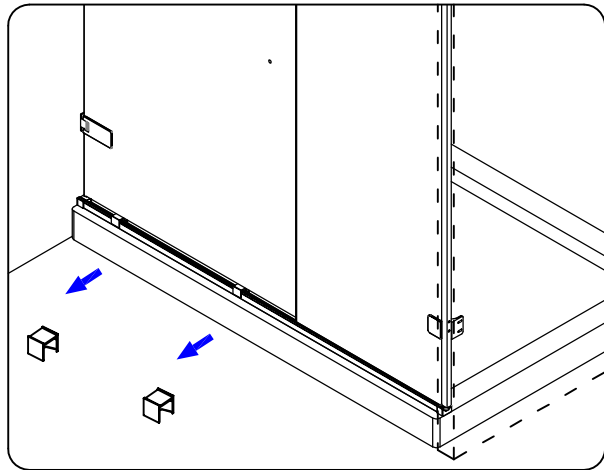
Step 19

Loosely fix hinges to wall starting at the top. If needed insert packers provided behind hinge plate to ensure even gap from top to bottom between closing edge of door and Inline panel. Ensure gap is between 6mm and 9mm.



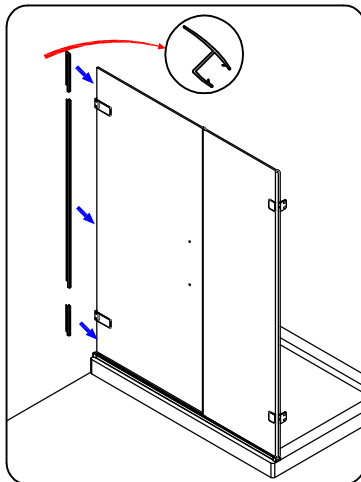
Step 20

To remove bottom positioning aids open door outwards.



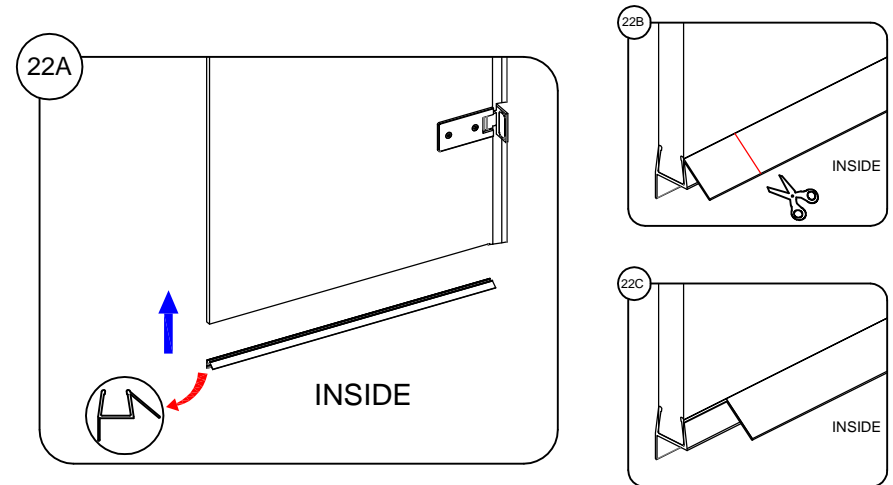
Step 21

Left and right hand seal kits are provided, determine handing and use appropriate seal kit. Left hand model shown below. Push on longest seal between hinges onto back edge of door keeping fin to inside. Take seal with 45° cut and fit to bottom of door keeping 45° cut to bottom. Fit remaining seal to top.



Step 22

To fit bottom seal push on end with 45° cut tight to corresponding cut in vertical seal. Notch fin to end of bottom seal where it meets the closing seal.

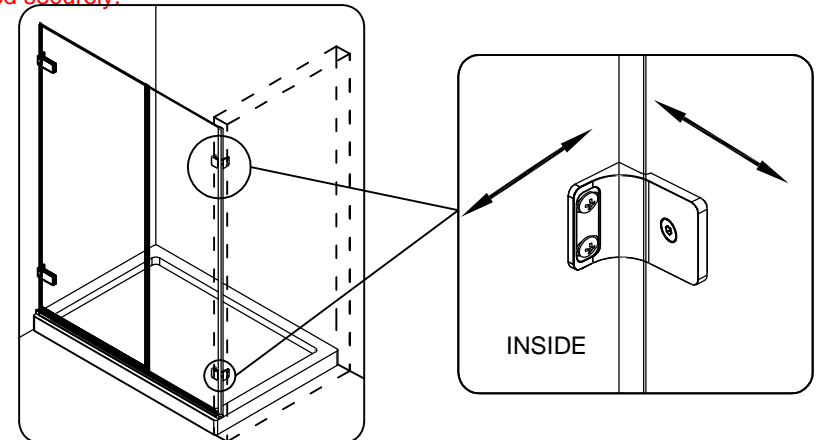


Step 23 Adjusting fixed and hinged panels

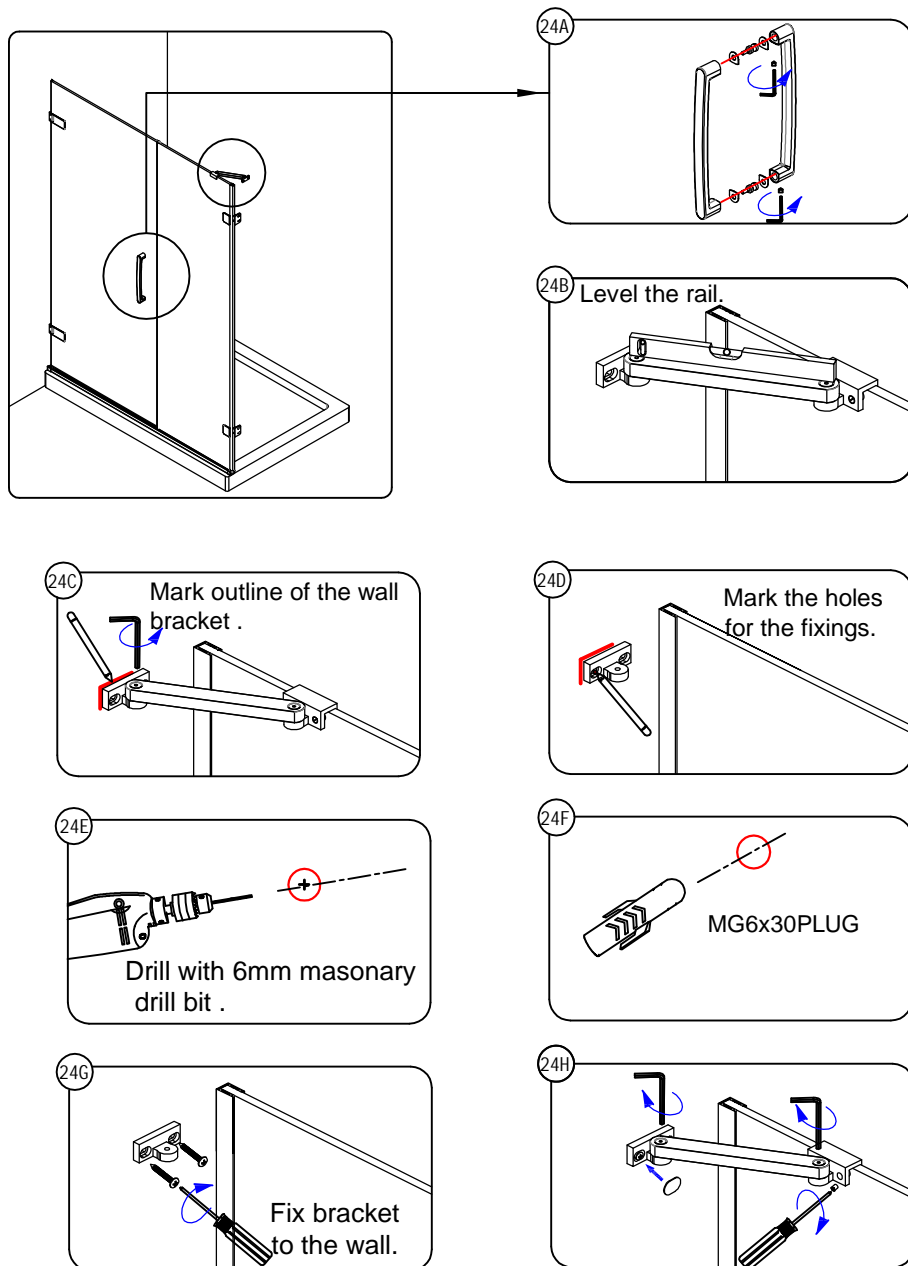
If after fitting doors and fixed panel and you still need adjustment to align doors etc ,you can achieve this by loosening the screws fixing the hinge to the wall and the bolts clamping the bracket/hinge to the glass.

Adjust the panels until the desired fit is achieved. Fully tighten all fixings.

Note: If not further adjustment is needed make sure all fixings have been tightened securely.



Step 24 Fix the top rail and the handle.



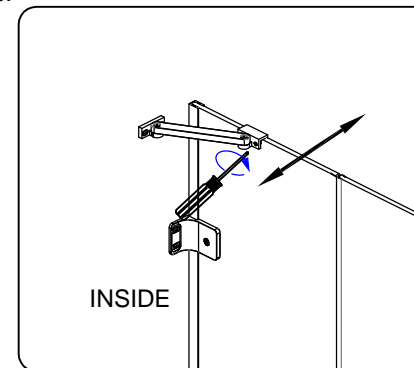
Step 25 Door adjustment

To adjust door to get required contact against closing seal first support door with door locating aids. Loosen all bolts fixing both hinges to glass and move by required amount. Tighten all bolts and remove door positioning aids.

Step 26 Additional adjustment

Where an angled bracing bar is fitted additional adjustment can be made by:

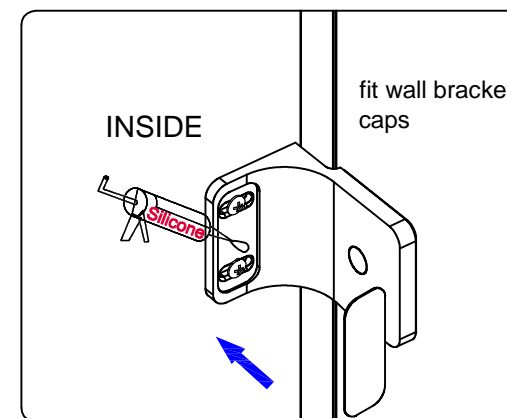
- 1) Loosen the 2 screws clamping the glass.
- 2) Move the glass panel in the direction required (see arrow).
- 3) Tighten the 2 screws.



Step 27 Fitting cover caps.

Fitting cover caps. Peel off protective strip to adhesive tape to back of cap and firmly press in position.

Tip : We recommend that you place a dab of silicone to the back of the cover caps at each end of the tape.



Step 28 Sealing your enclosure.

Make sure all surfaces are thoroughly cleaned and dry before applying sealant.

Only seal the outside of the enclosure (red line). Do not seal the inside.
Seal vertically along the wall, along the outside edge of the bottom profile and any joins in the profile, including where the bottom track meets the end brackets.

