

M E R L Y N

ARYSTO  
EIGHT

# Installation Guide

## Reversible Sliding door

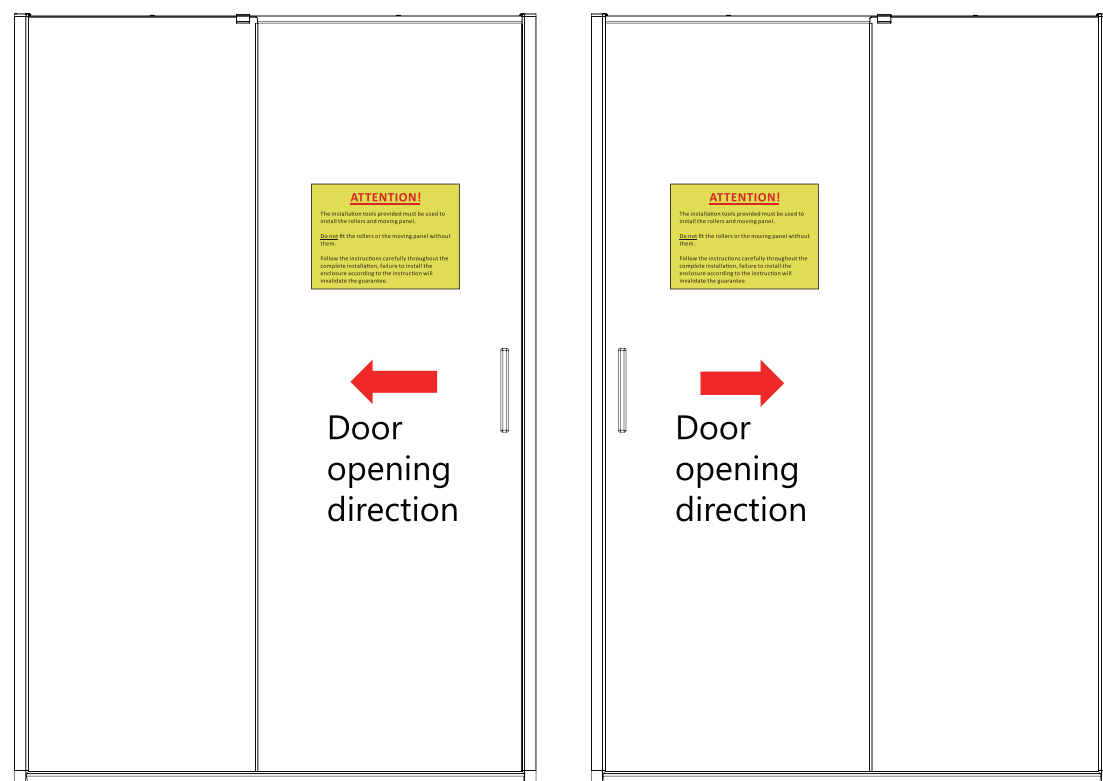
**IMPORTANT:**  
Please read the complete instructions  
before commencing fitting.

Make sure the tray is 100% level in all directions.  
Do Not attempt to install the product unless you  
can tick all 4 boxes satisfactorily.

- Check that you have the tools required ☐
- Check the installation site is compatible with  
the sizes of door supplied ☐
- Check all the enclosure components are present ☐
- Check the installation kit is complete ☐

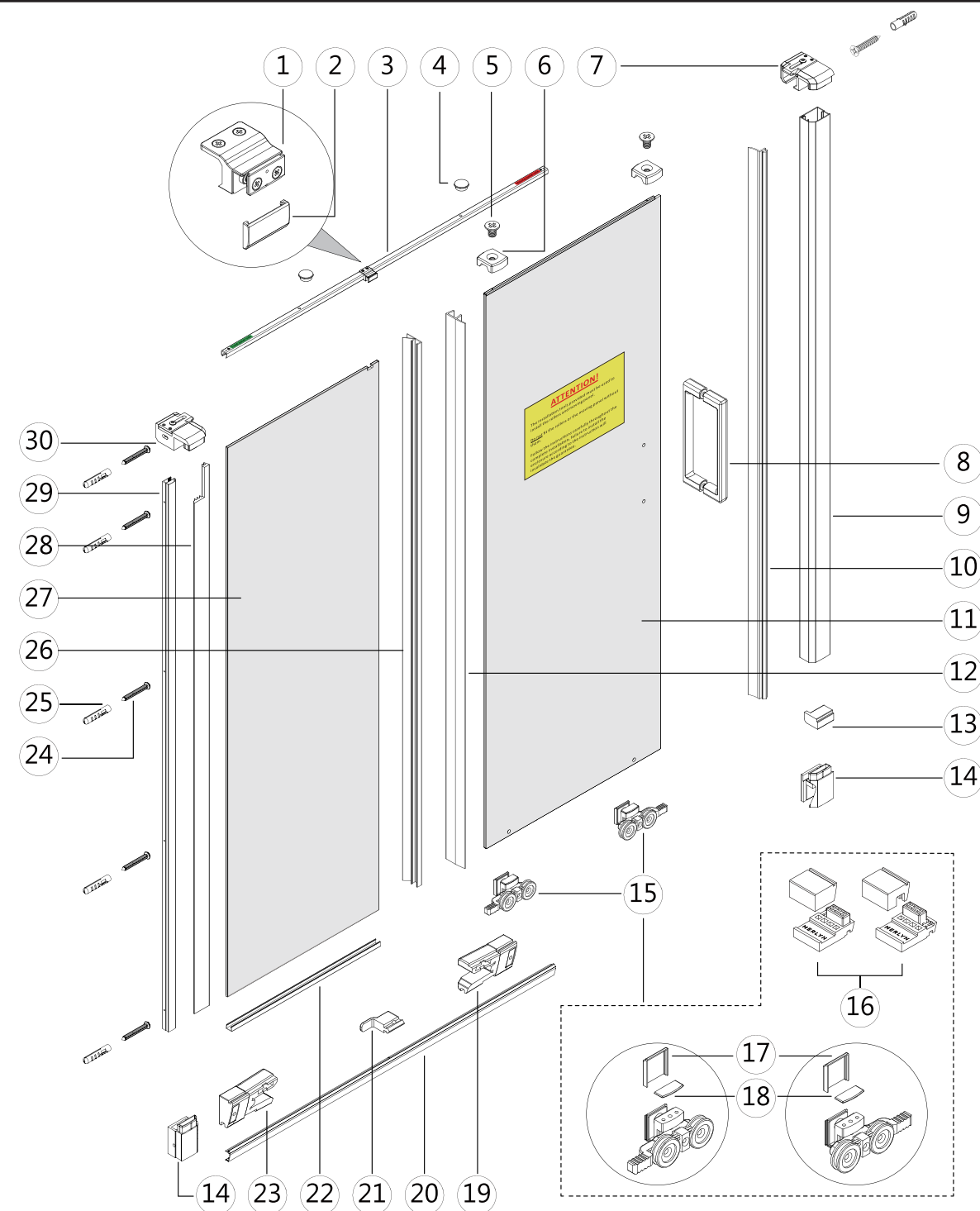
Left hand

Right hand



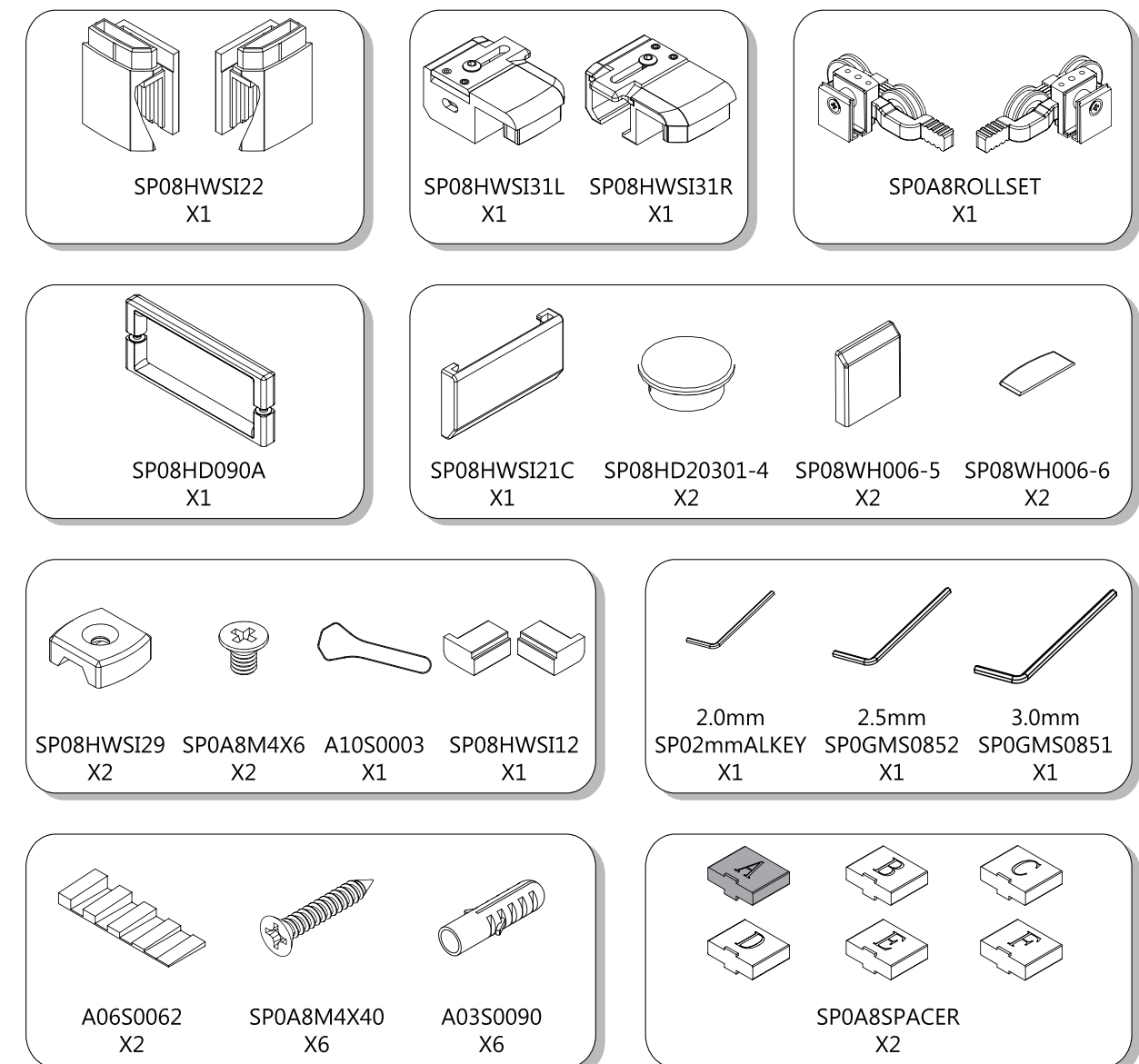
The wall plugs supplied with the installation kit are for use in solid walls. Hollow or 'stud partition' walls will require alternative fixings. Please consult a hardware supplier for the correct type. It may also be necessary to consult your tiling supplier about the correct method for drilling your tiles.

**ATTENTION: TAKE EXTREME CARE WHEN HANDLING GLASS, WEAR PROTECTIVE EYEWEAR AND CLOTHING. DO NOT LEAVE THE GLASS ON HARD SURFACES AND AVOID CONTACT BETWEEN THE GLASS EDGES AND HARD SURFACES OR IMPACTS DURING THE INSTALLATION.**

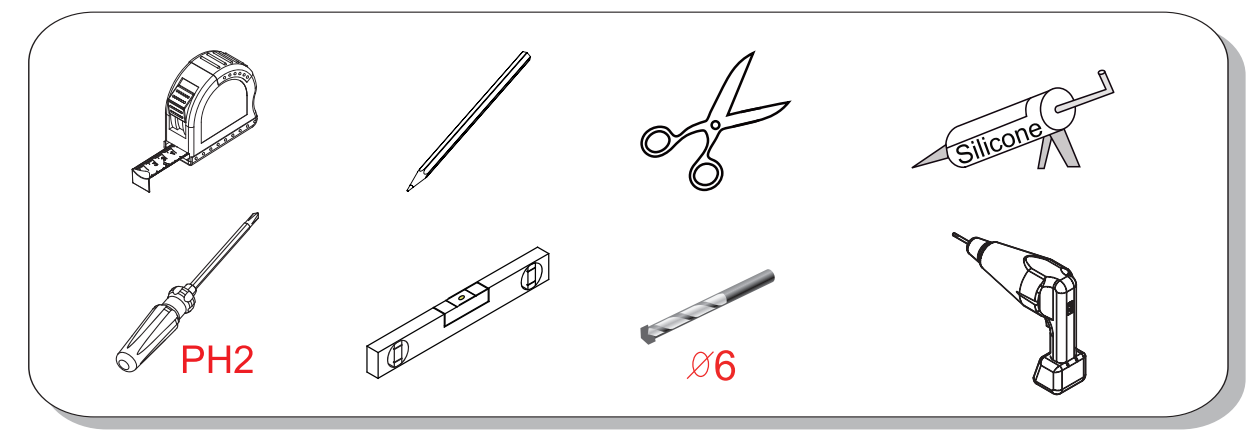


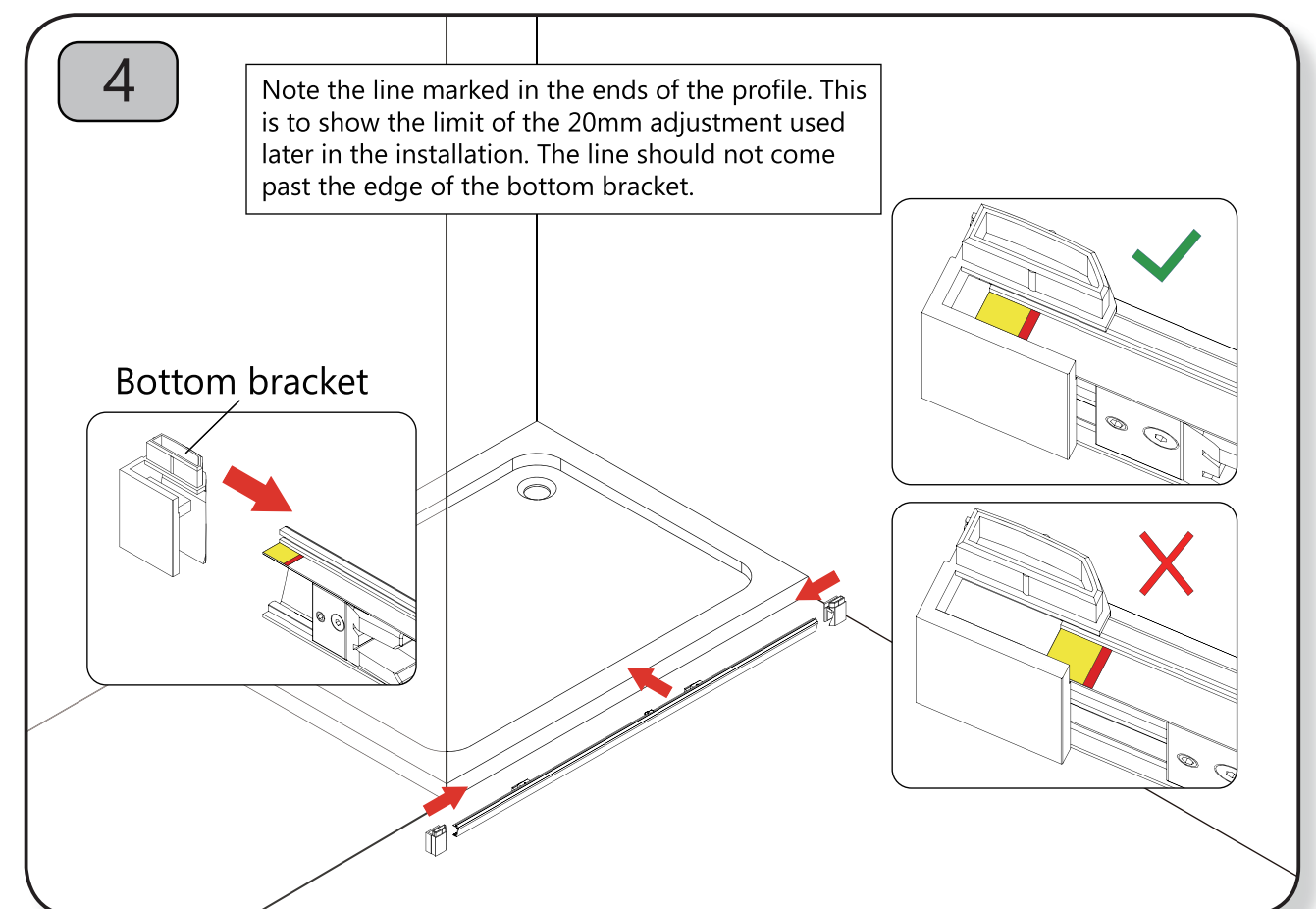
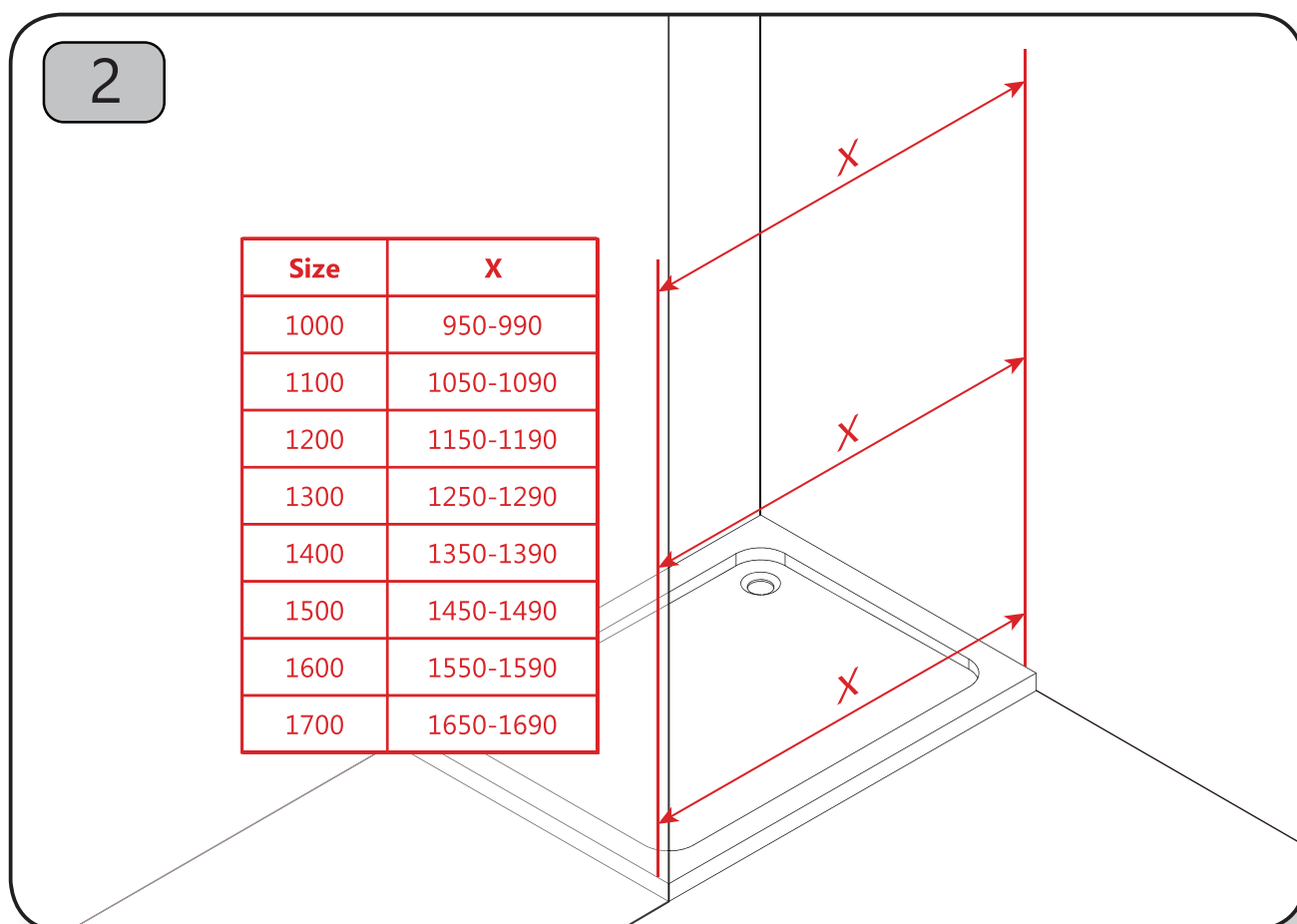
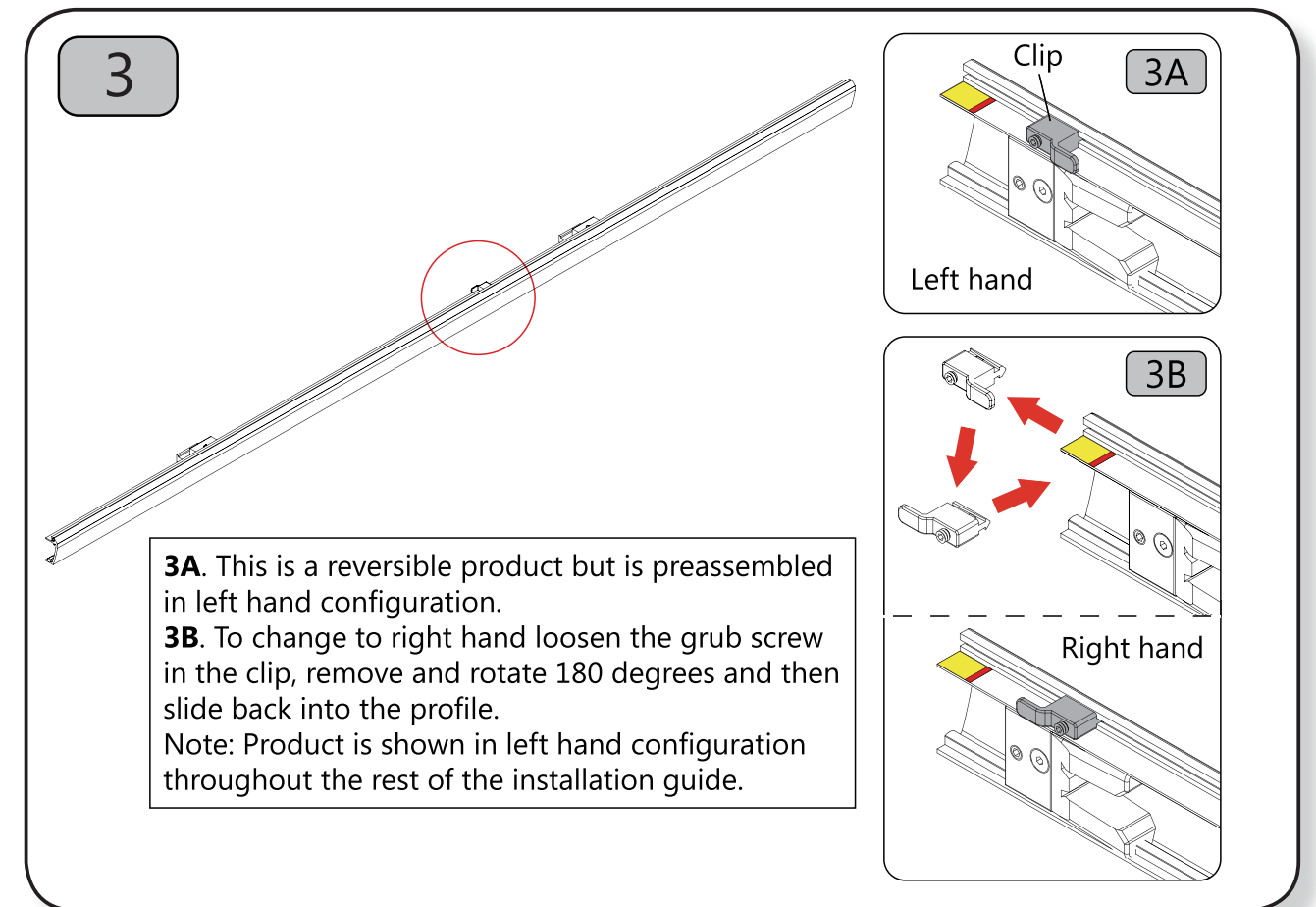
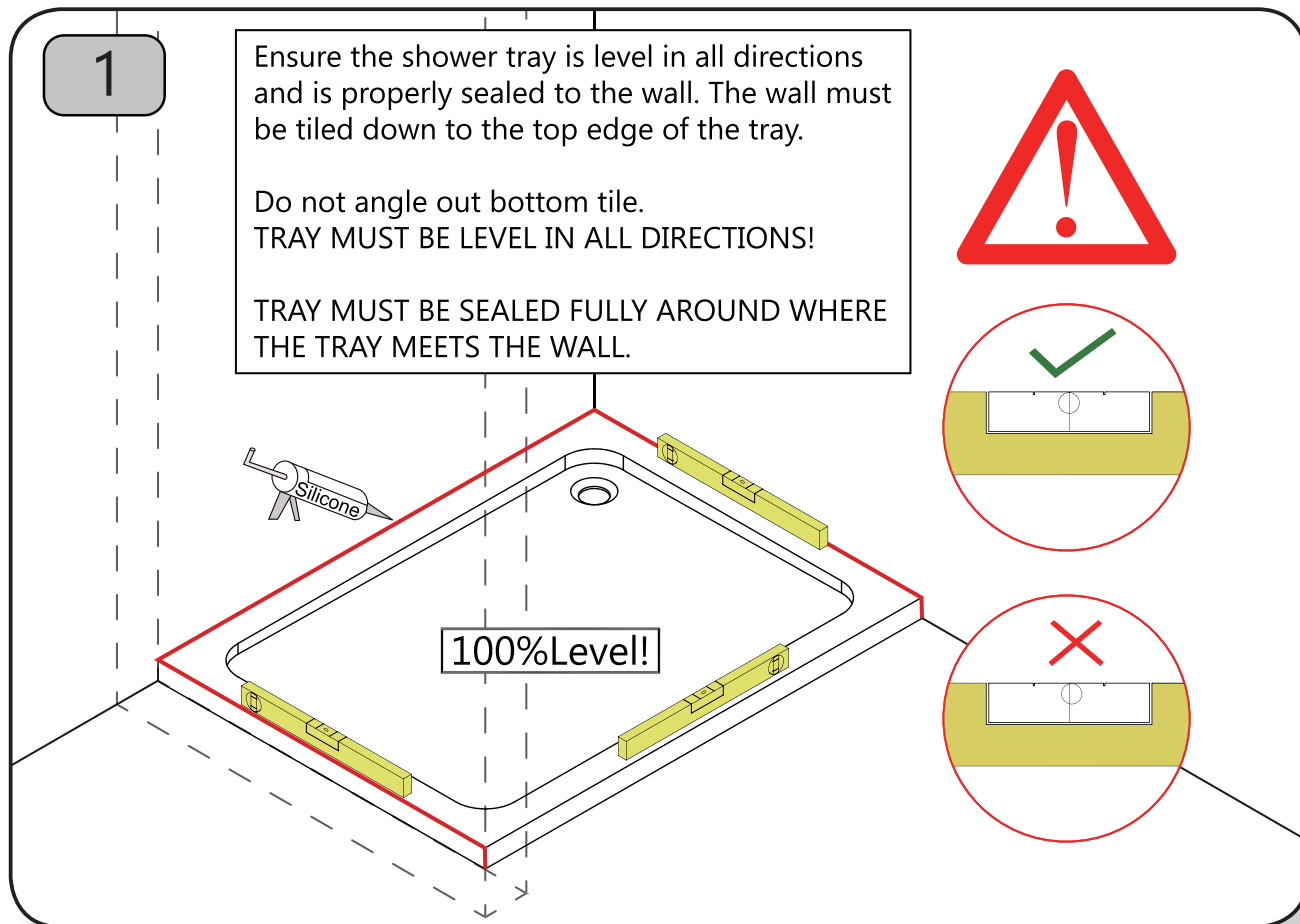
No.	QTY	Descriptions	Code	No.	QTY	Descriptions	Code	No.	QTY	Descriptions	Code
1	1	Top Bracket - complete	SP08HWSI21	12	1	Moving panel upright seal	SP08SESH09	23	1	Bottom roller stop left	SP08HWSI36L
2	1	Fixed panel bracket cover cap	SP08HWSI21C	13	2	Plug for closing post	SP08HWSI12	24	6	M4 x 40 countersunk screw	SP0A8M4X40
3	1	Top Rail	A	14	2	Wall profile bottom bracket	SP08HWSI22	25	6	6MM wall plug	A03S0090
4	2	Top rail guide cover cap	SP08HD20301-4	15	1	Complete roller set with installation tool	SP0A8ROLLSET	26	1	Fixed panel upright seal	SP08SESH12
5	2	M4x6 screw	SP0A8M4X6	16	1	Moving panel installation tools	SP0A8DRJIG	27	1	Fixed panel	D
6	2	Top guide	SP08HWSI29	17	2	Roller inside cap	SP08WH006-5	28	1	Wall profile upright seal	SP08SECY52A
7	1	Wall profile top bracket - right	SP08HWSI31R	18	2	Roller top cap	SP08WH006-6	29	1	Wall profile	SP08ALSH02
8	1	Handle	SP08HD090A	19	1	Bottom roller stop right	SP08HWSI36R	30	1	Wall profile top bracket - left	SP08HWSI31L
9	1	Closing post	SP08ALSH03	20	1	Bottom profile	C				
10	1	Closing seal	SP08SESH53	21	1	Fixed panel fixed block	SP08HWSI04				
11	1	Moving panel	B	22	1	Bottom seal	SP08SESH06				

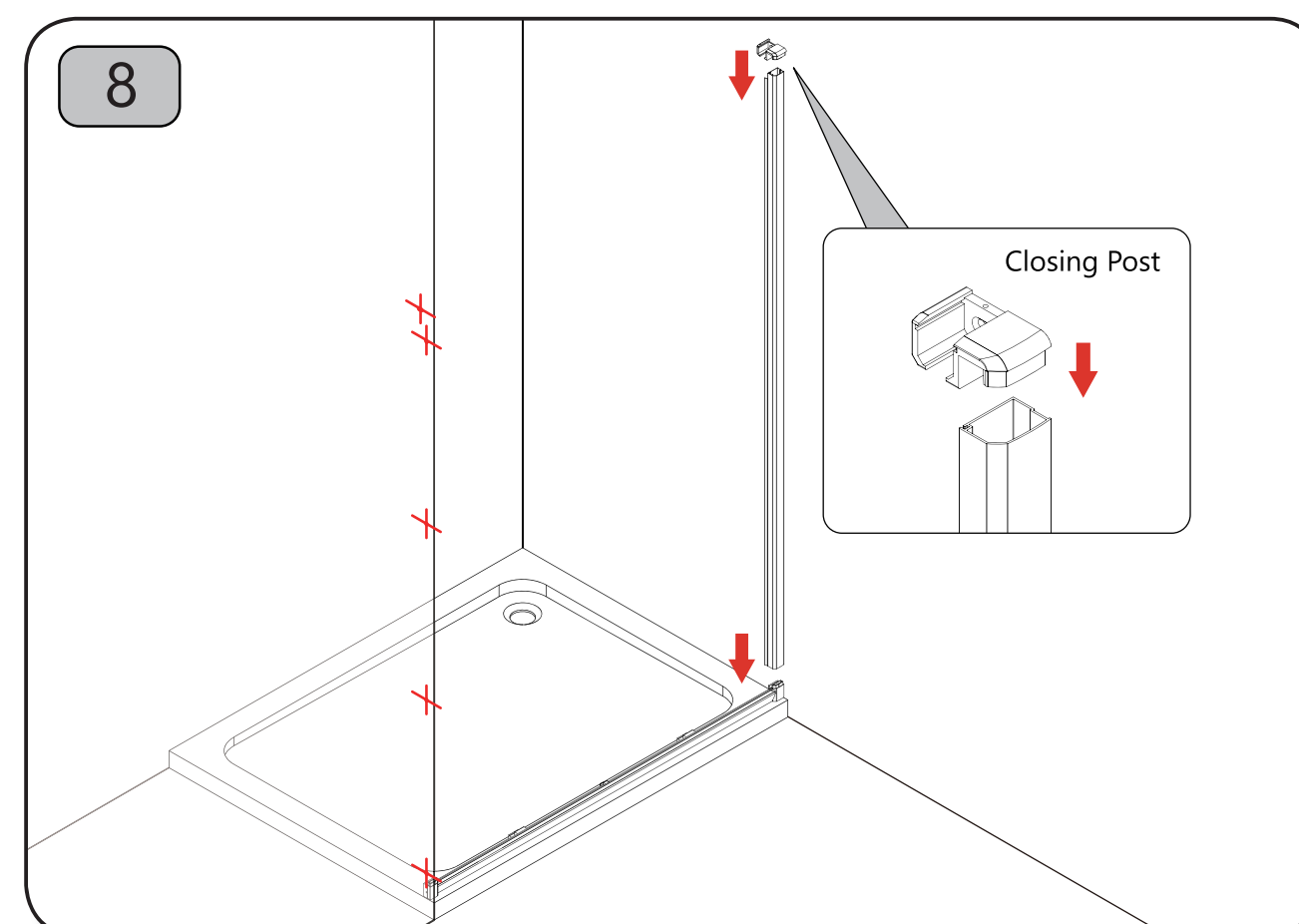
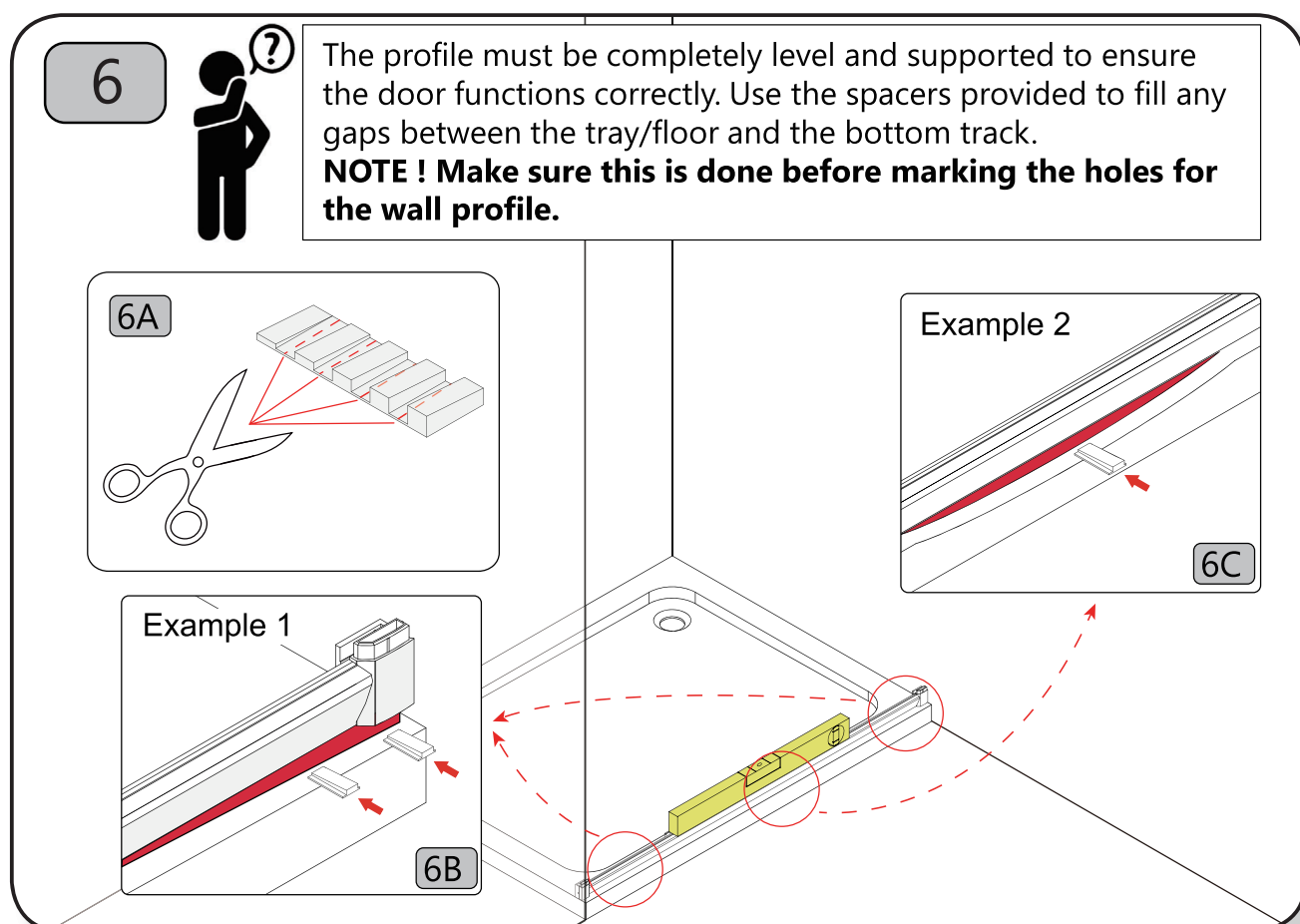
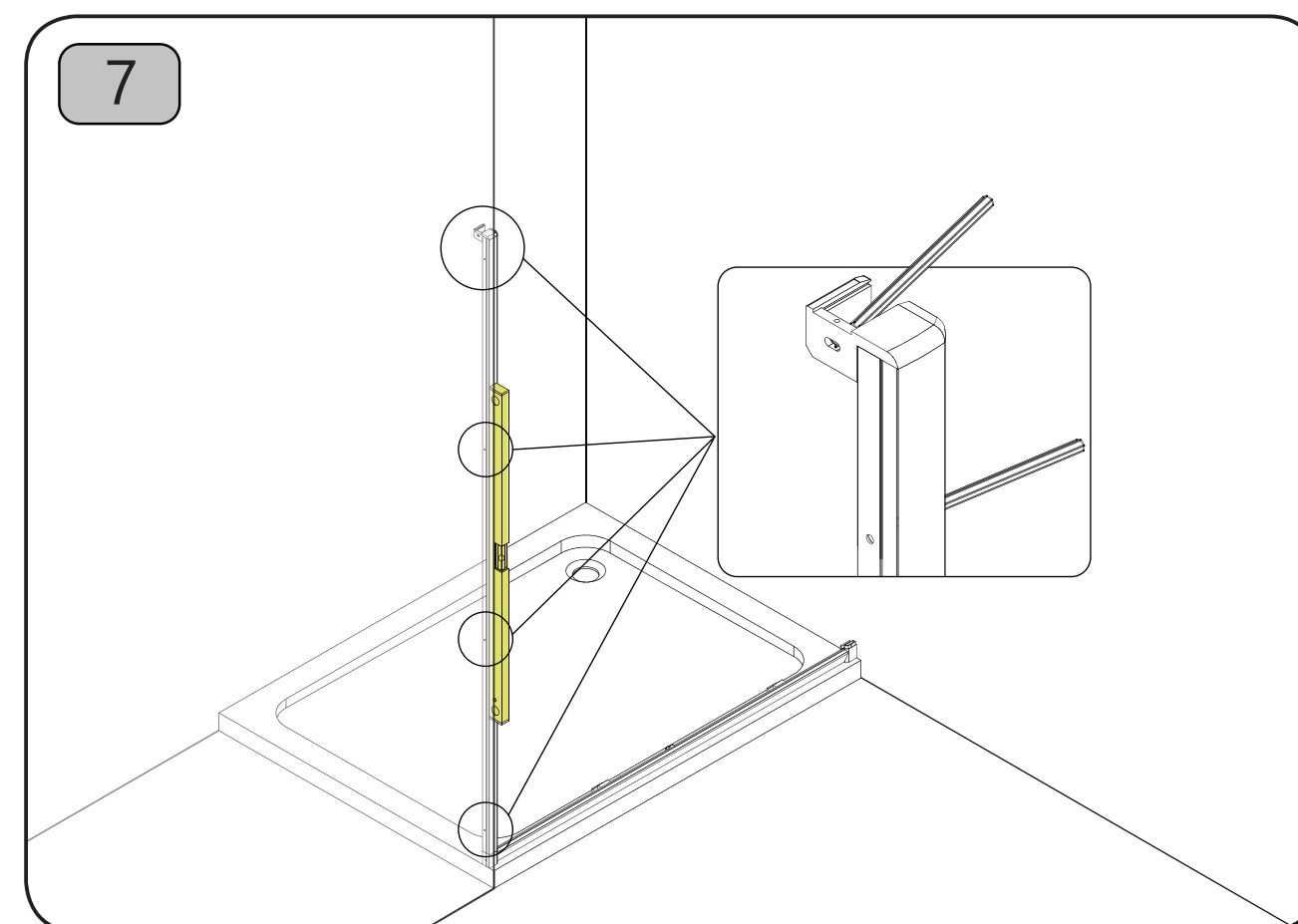
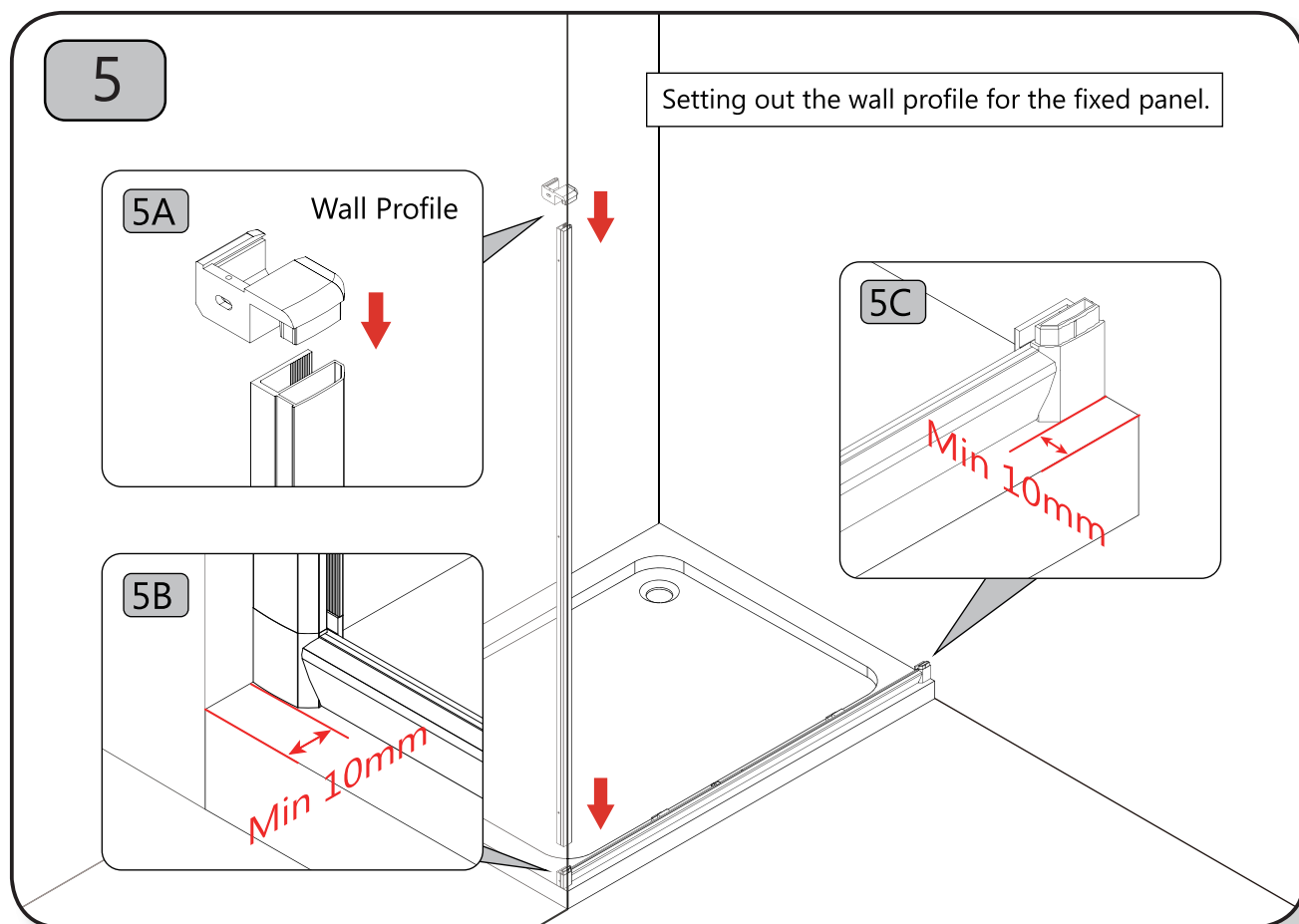
## Fixing Kit Components

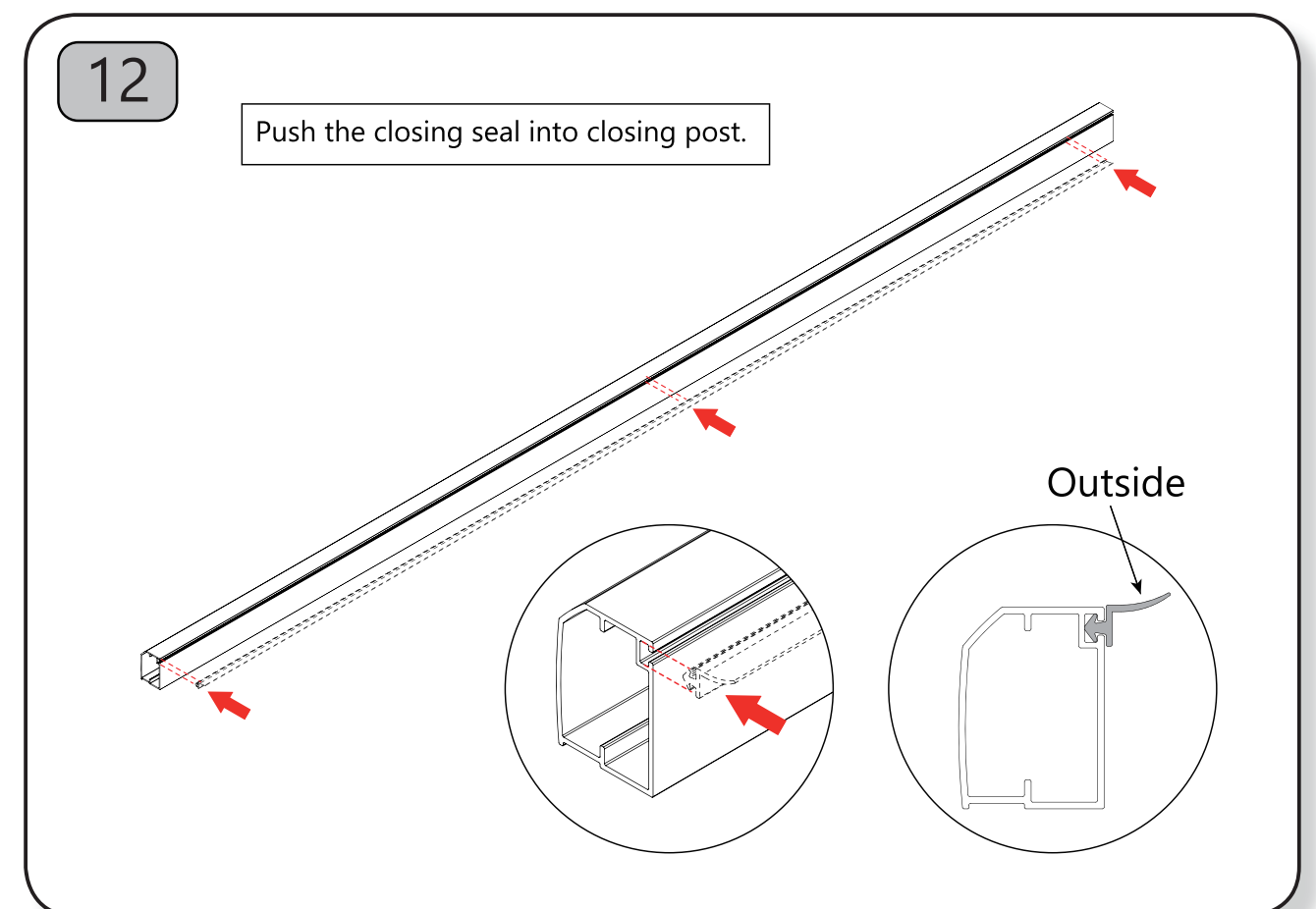
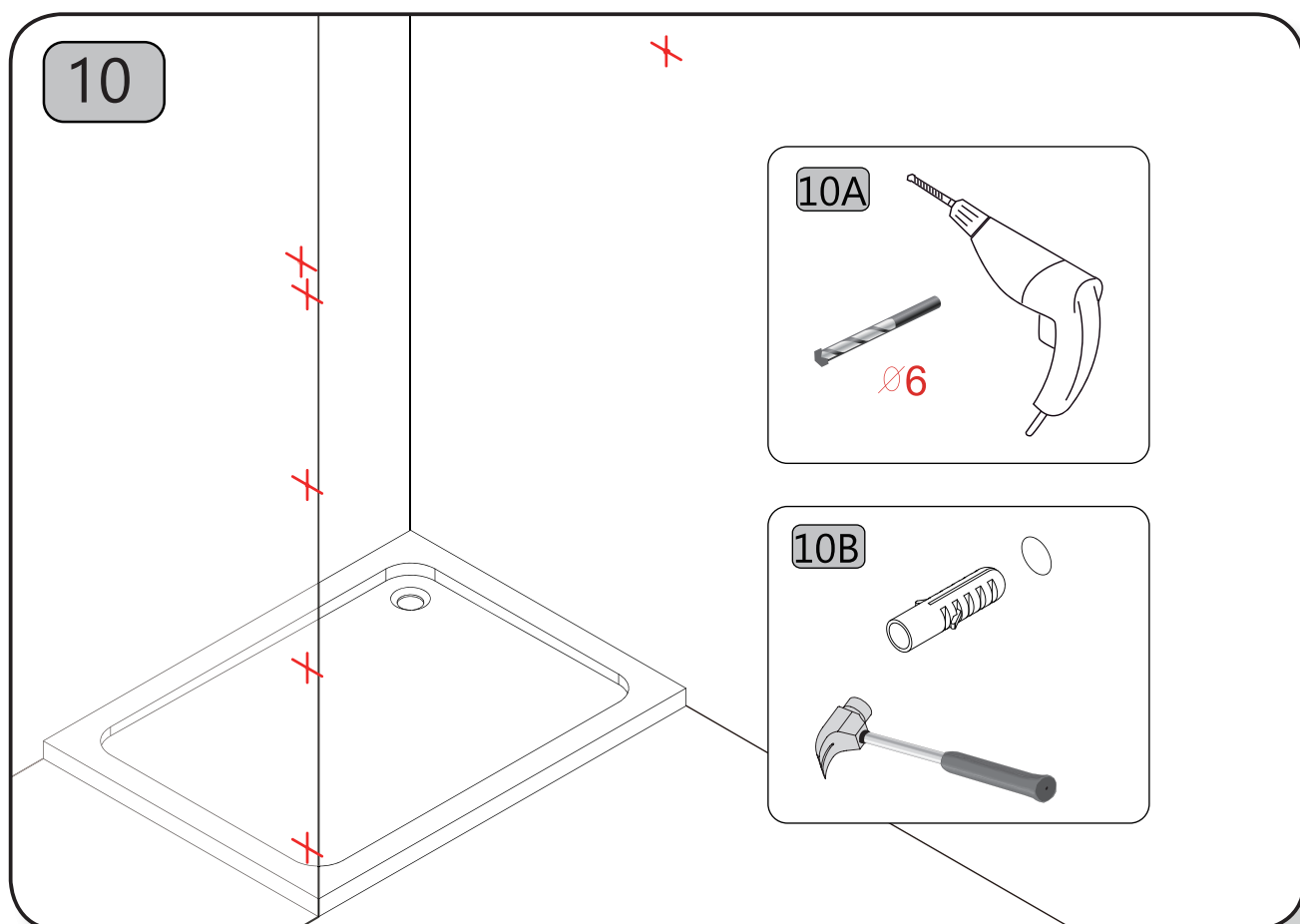
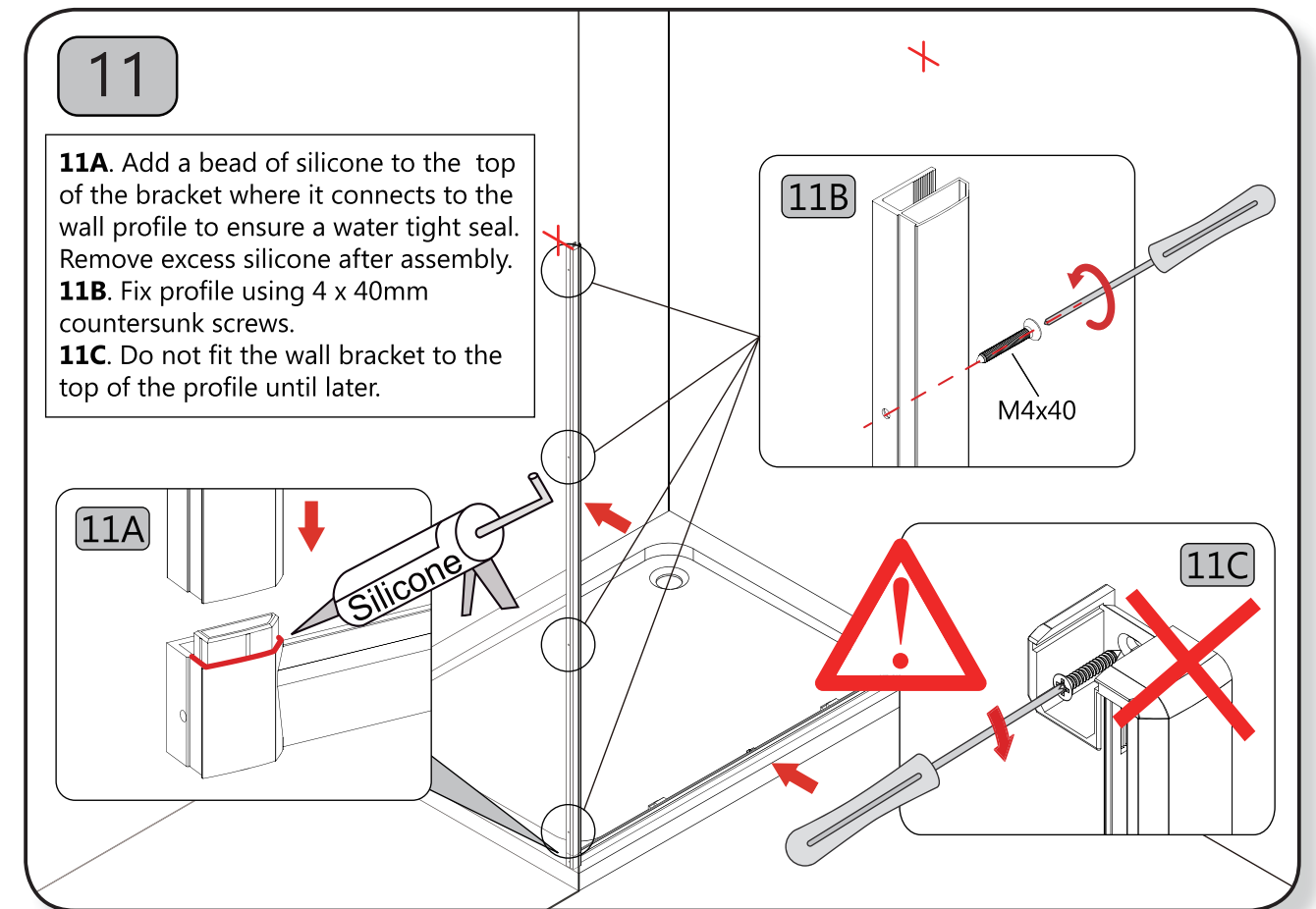
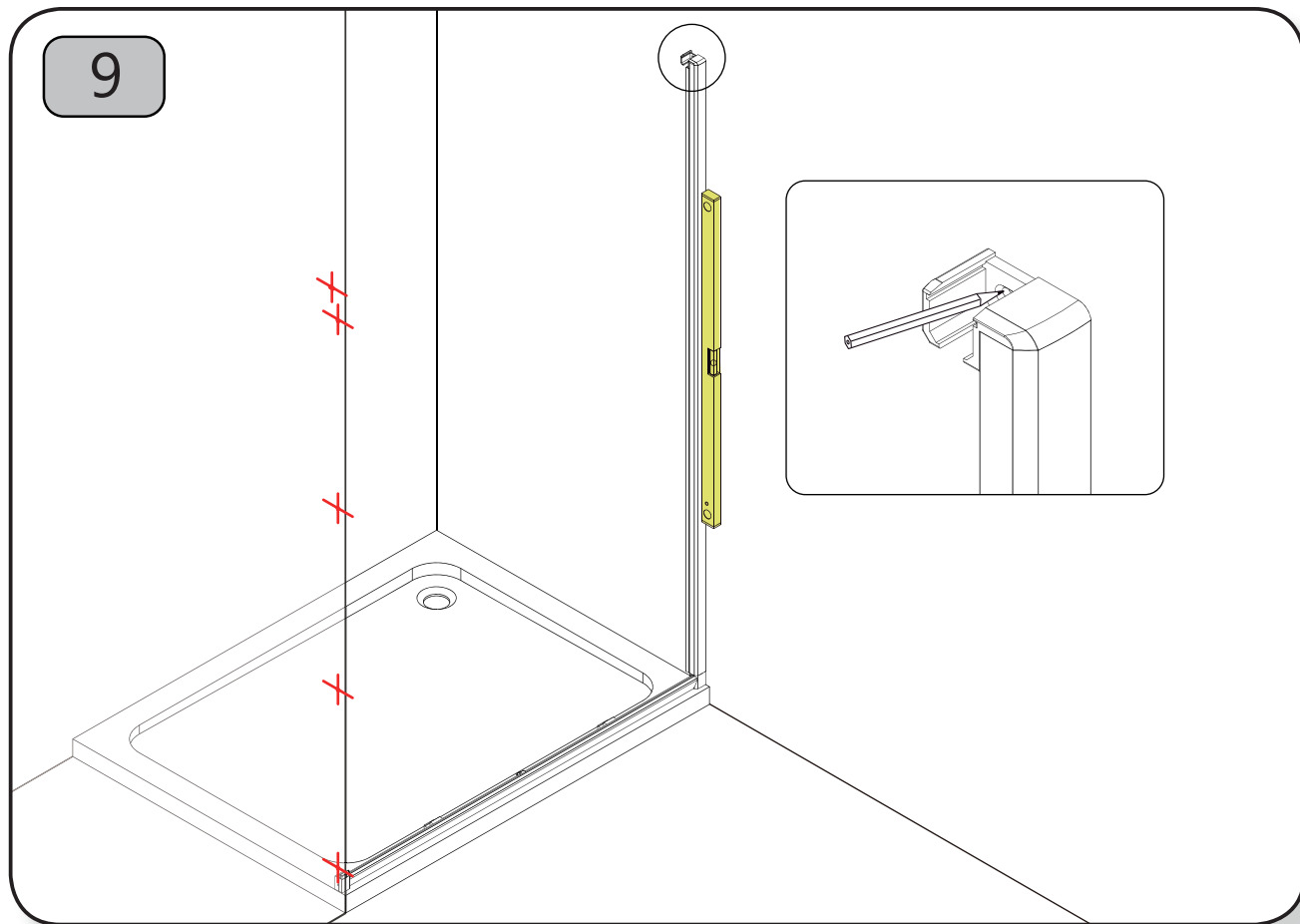


## Tools required







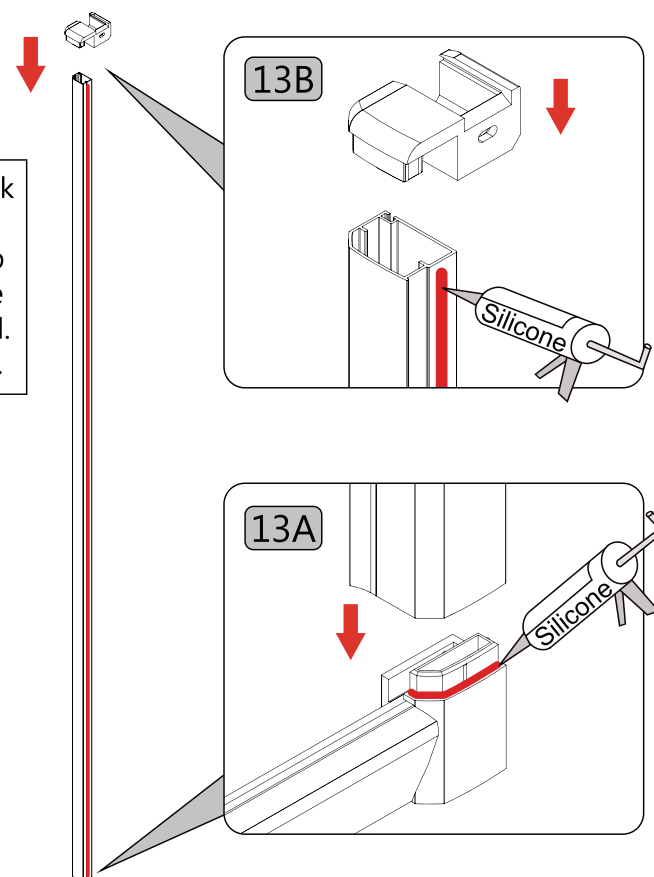




13

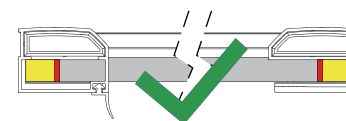
**13A.** Add a bead of silicone to the back of the closing post.

**13B.** Add a bead of silicone to the top of the bracket where it connects to the wall profile to ensure a water tight seal. Remove excess silicone after assembly.

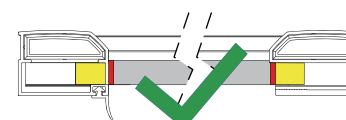


15

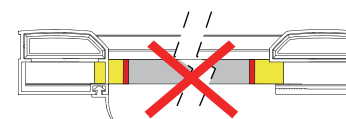
Min adjustment



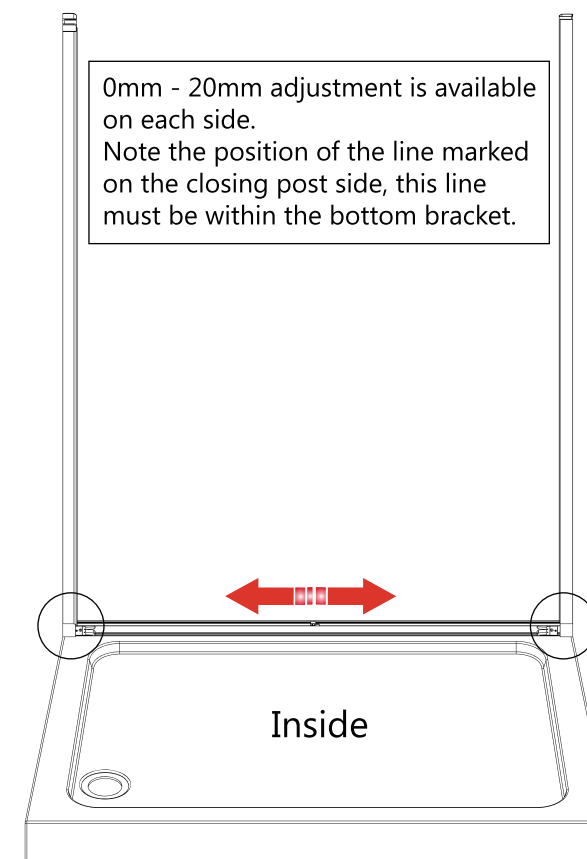
Max adjustment



Over adjustment

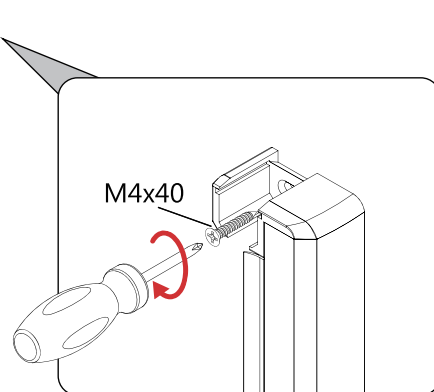


0mm - 20mm adjustment is available on each side.  
Note the position of the line marked on the closing post side, this line must be within the bottom bracket.



14

M4x40



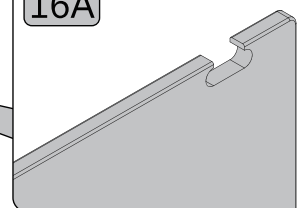
16

**16A.** Note the position of the slot in the fixed panel.

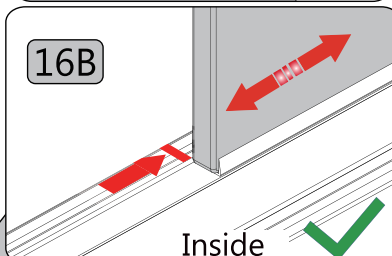
**16B.** Make sure the fixed panel clip is near the closing post. Lift the fixed panel onto the bottom profile and slide into the wall profile until the edge of the glass is aligned with the red line.

**Note:** For 1500 slider use the line furthest away from the wall.

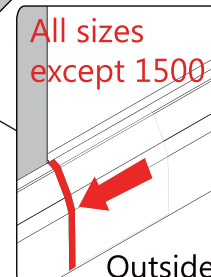
16A



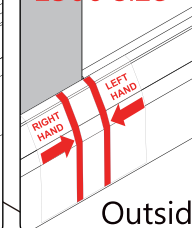
16B



All sizes except 1500

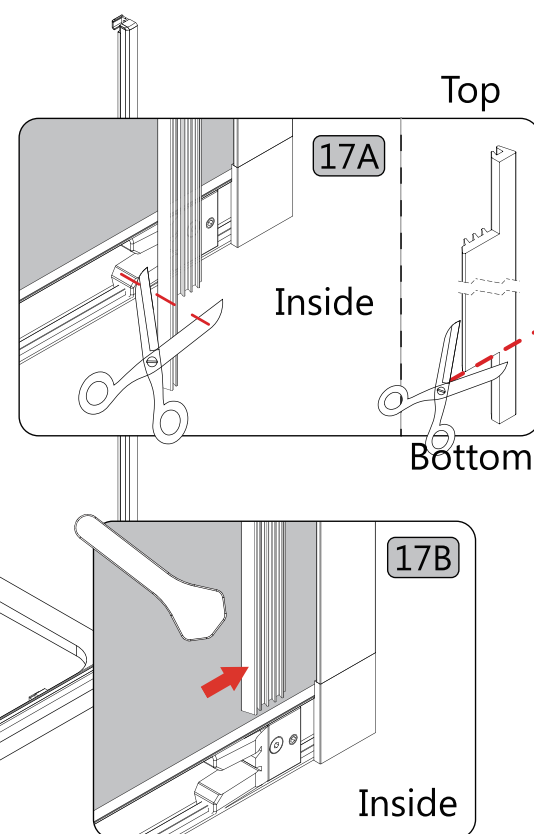


1500 size



17

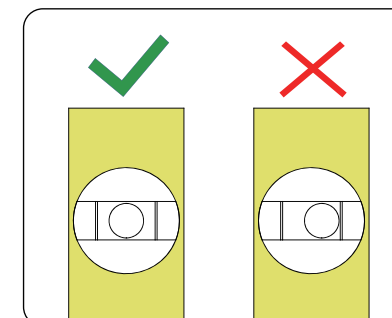
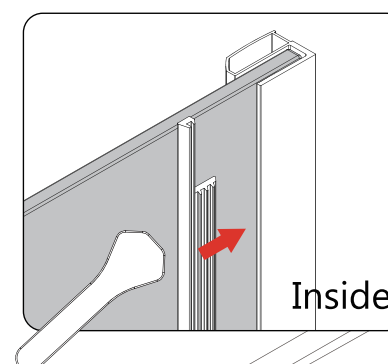
**17A.** Ensure the flat side of the wedge gasket is to the glass and the side with fins is to the profile. Trim the bottom only of the wedge gasket as shown.  
**17B.** Starting at the bottom insert the wedge gasket just 100mm – 200mm. DO NOT INSERT FULLY AT THIS STAGE !



100-200mm

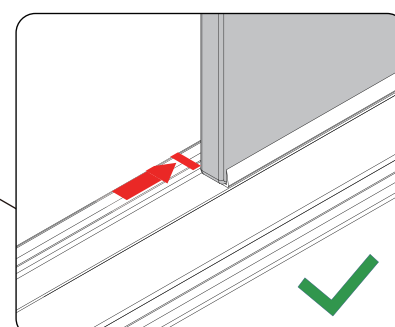
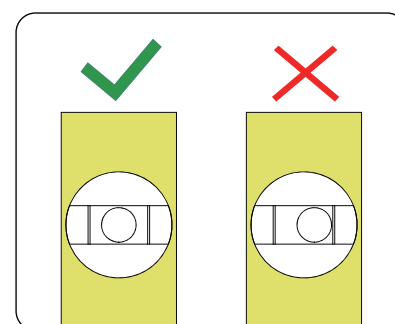
19

Insert the wedge gasket fully making sure to keep the fixed panel plumb.

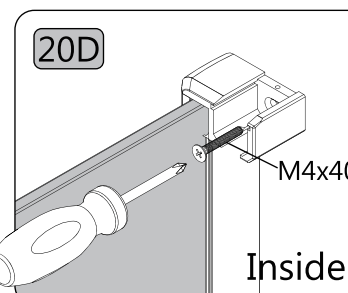
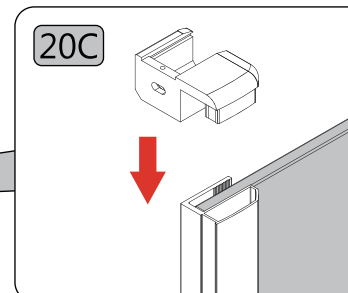
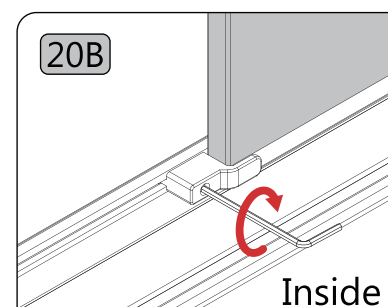
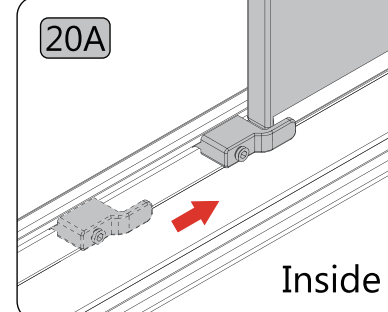


18

Adjust the glass until plumb making sure to keep the edge of the glass to the label on the profile.

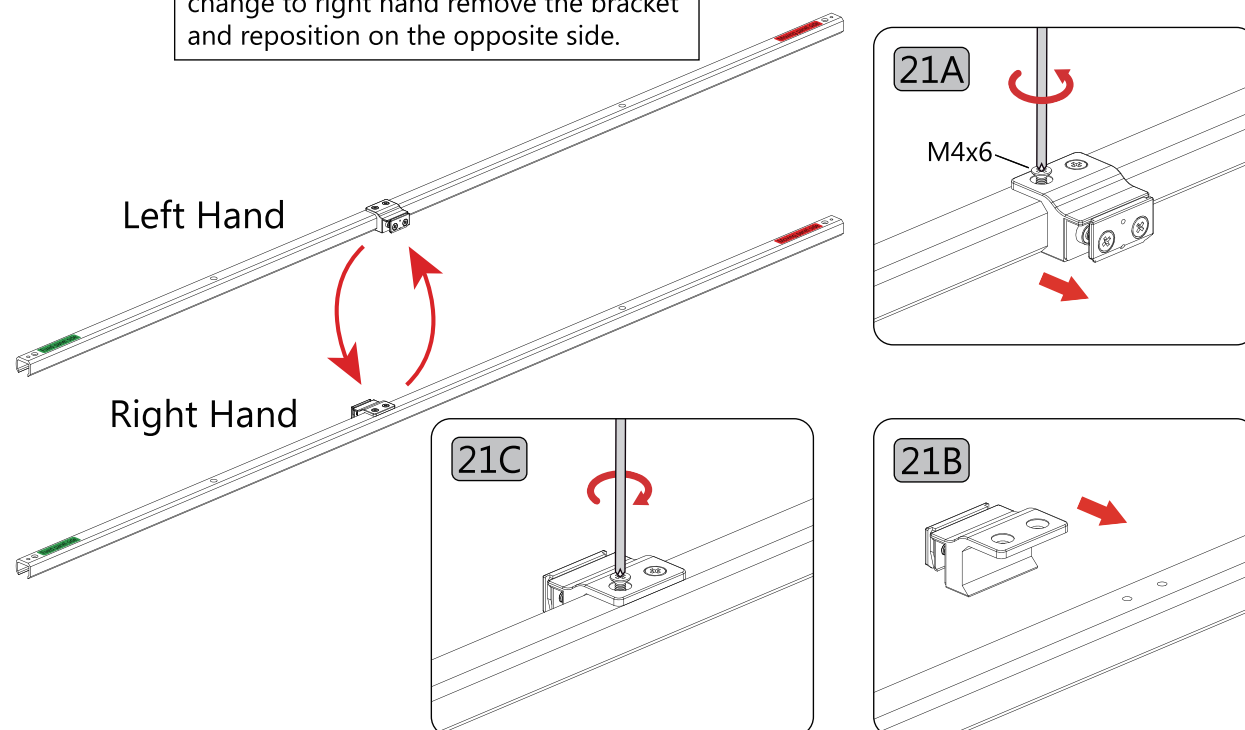


20

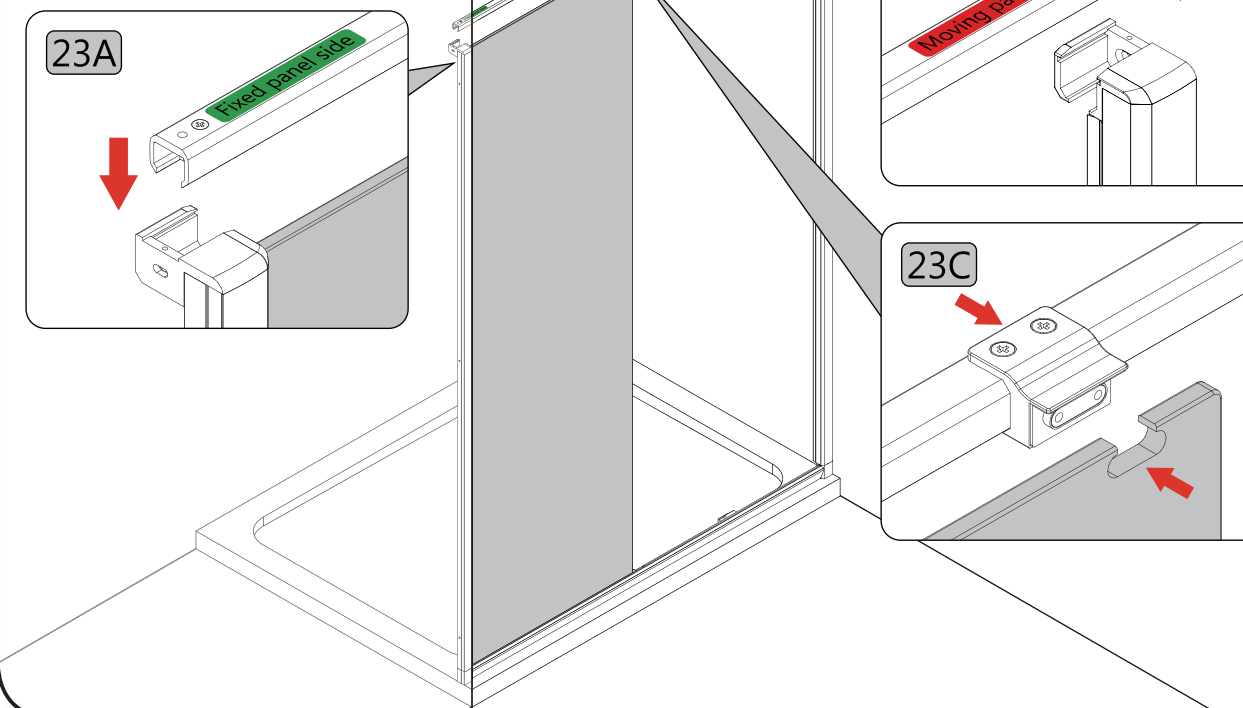


21

Reversing the handing on the top rail.  
Bracket is preassembled for left hand, to change to right hand remove the bracket and reposition on the opposite side.

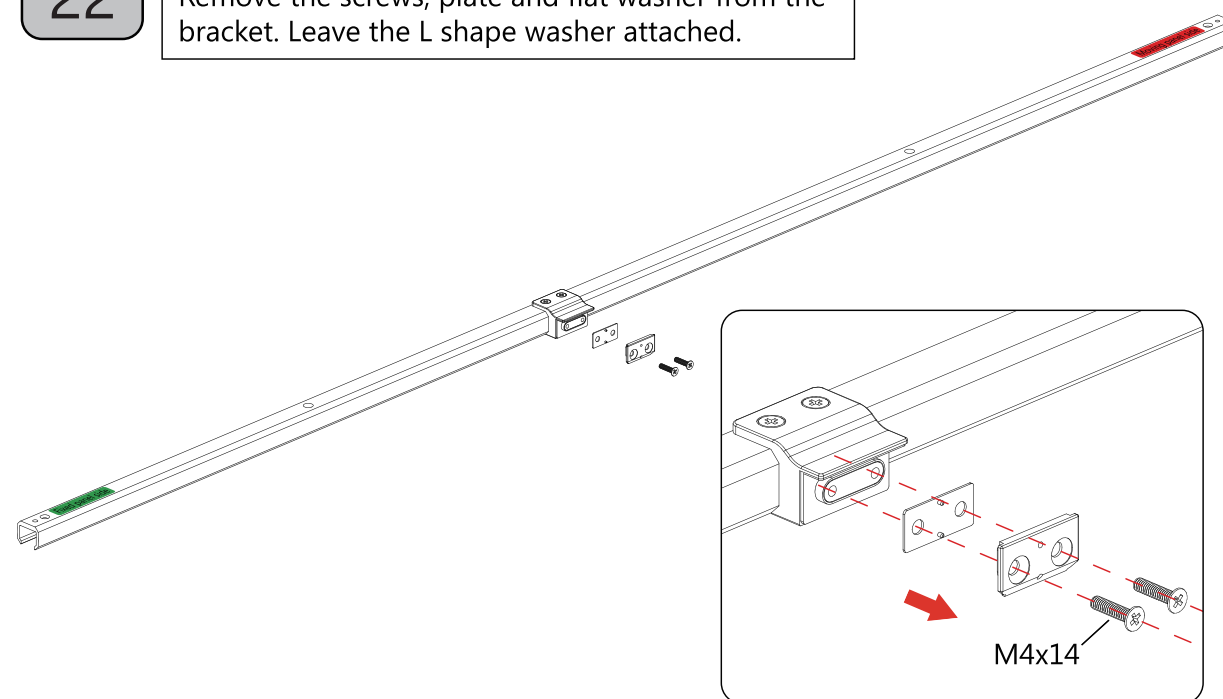


23

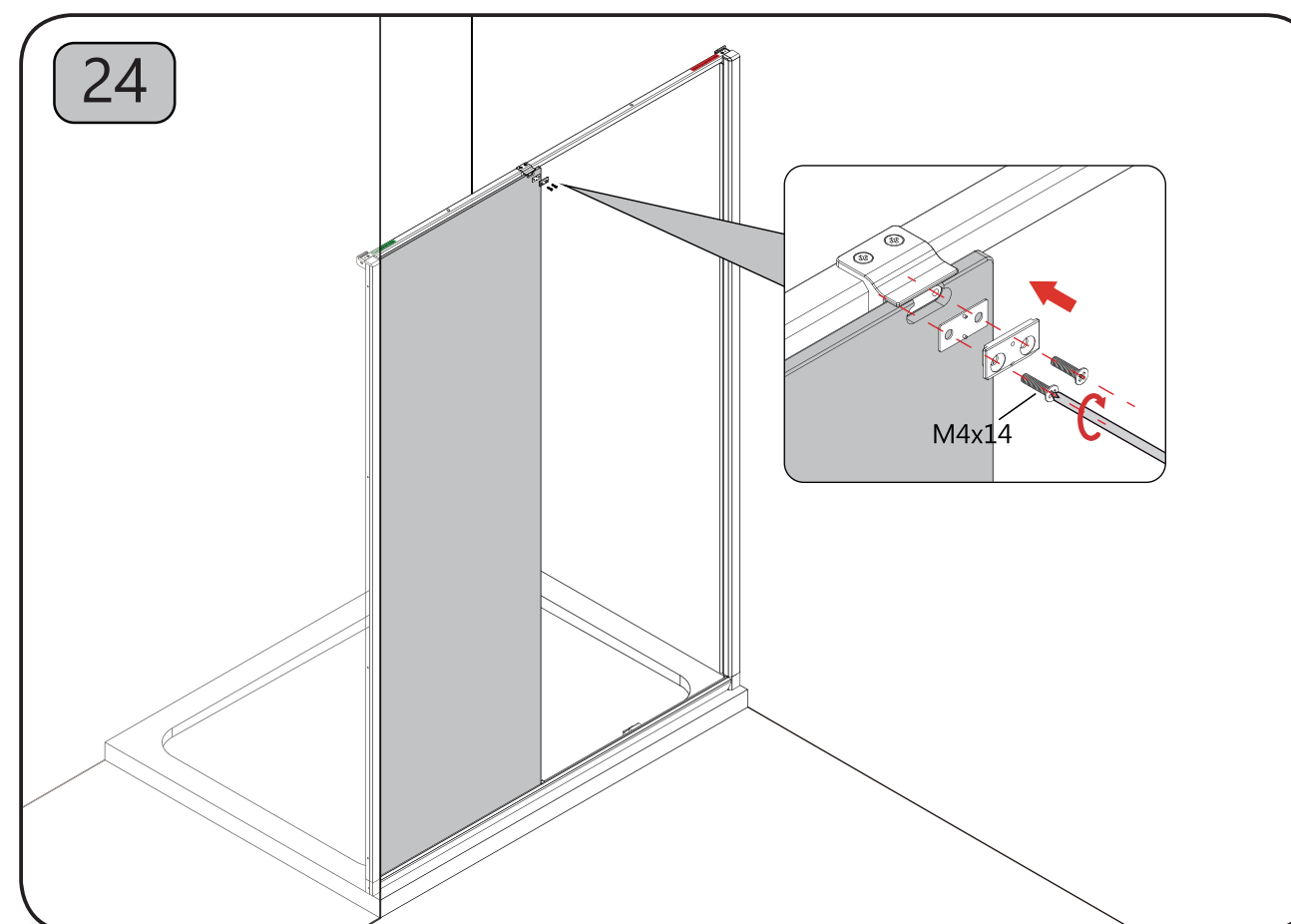


22

Remove the screws, plate and flat washer from the bracket. Leave the L shape washer attached.



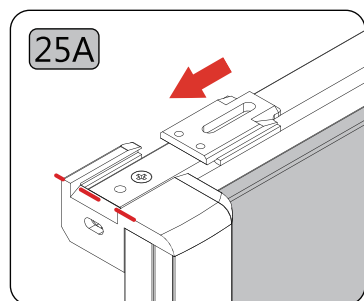
24



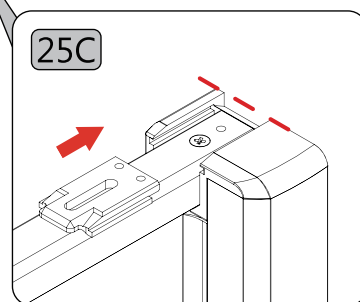


25

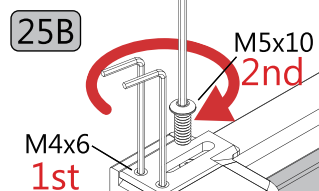
25A



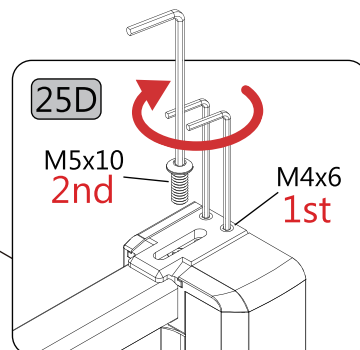
25C



25B



25D

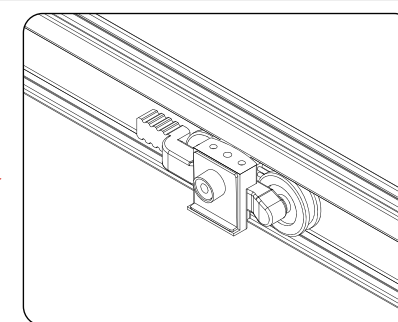
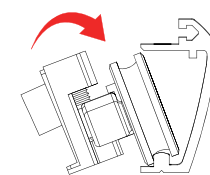


27

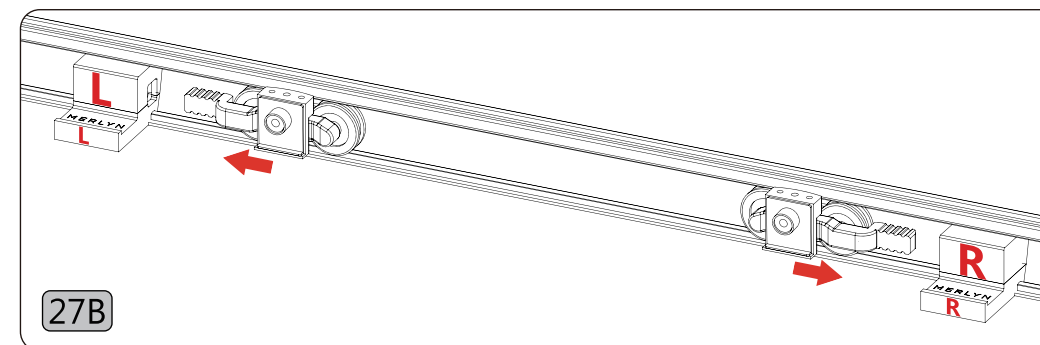
**27A.** Place the roller on the track at a slight angle and tilt forward.

**27B.** Slide the roller arm into the slot in the installation tool to hold the roller upright.

27A



27B



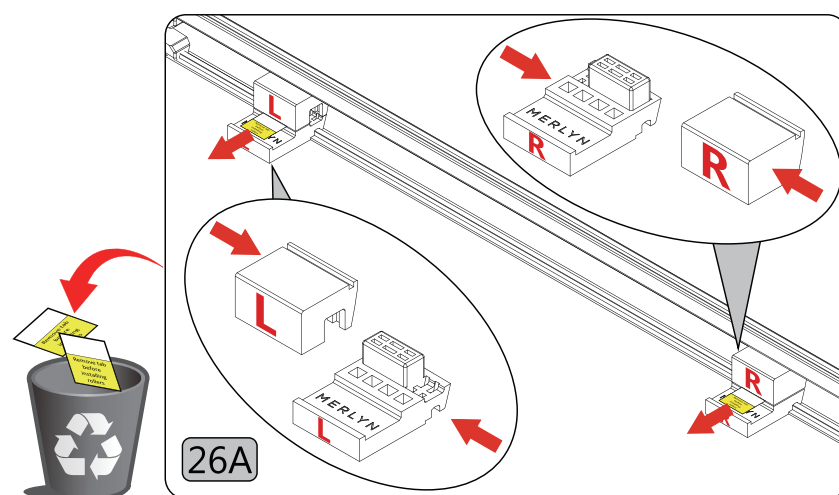
26

### Moving panel installation

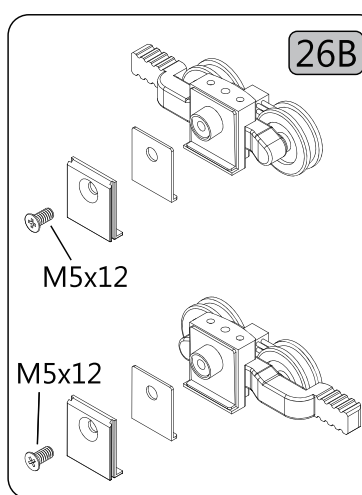
**26A.** Installation tools for the moving panel are preassembled to the bottom profile. These may have moved during transit or have been removed during the unboxing and need to be in the correct position to fit the moving panel.

**Note:** Parts are left and right handed (L&R) and are fitted from inside the enclosure.

**26B.** Remove the fixing plate and washer from both rollers.

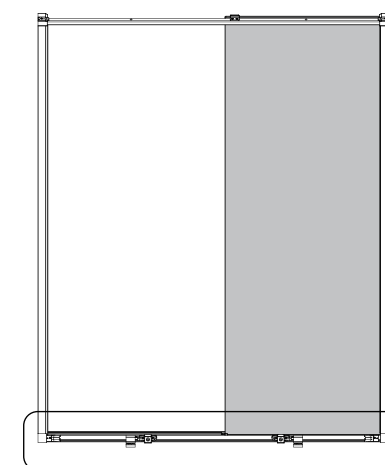


26B

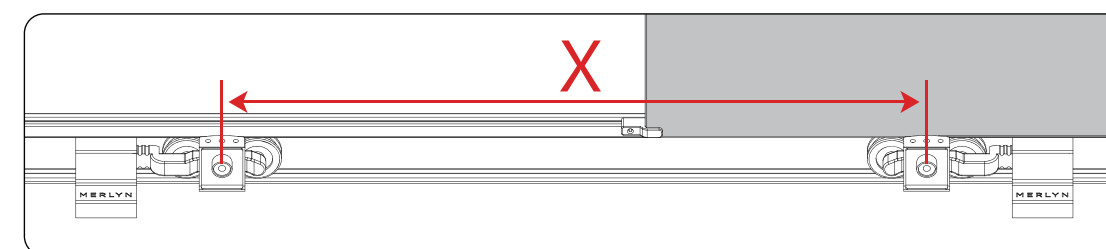


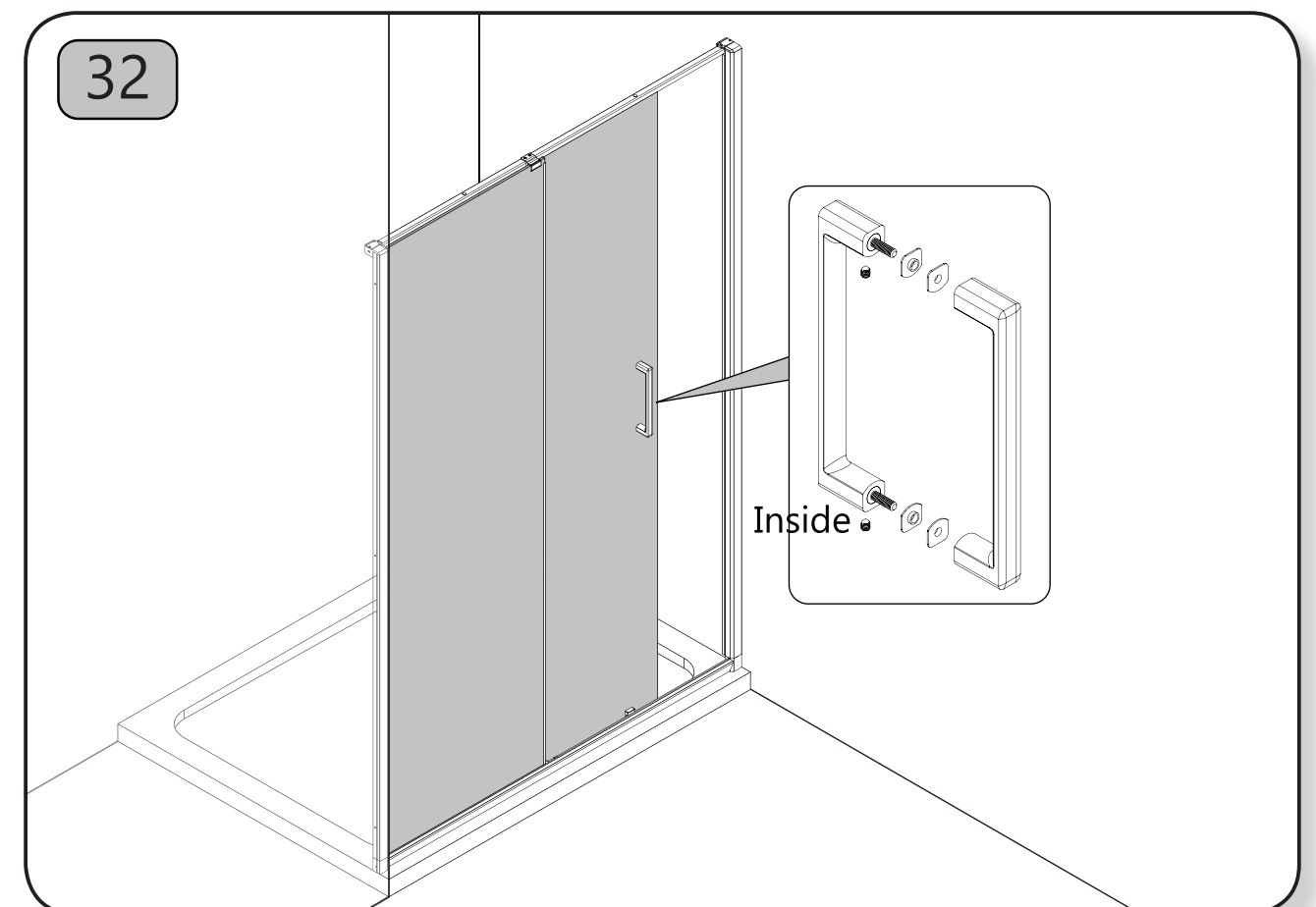
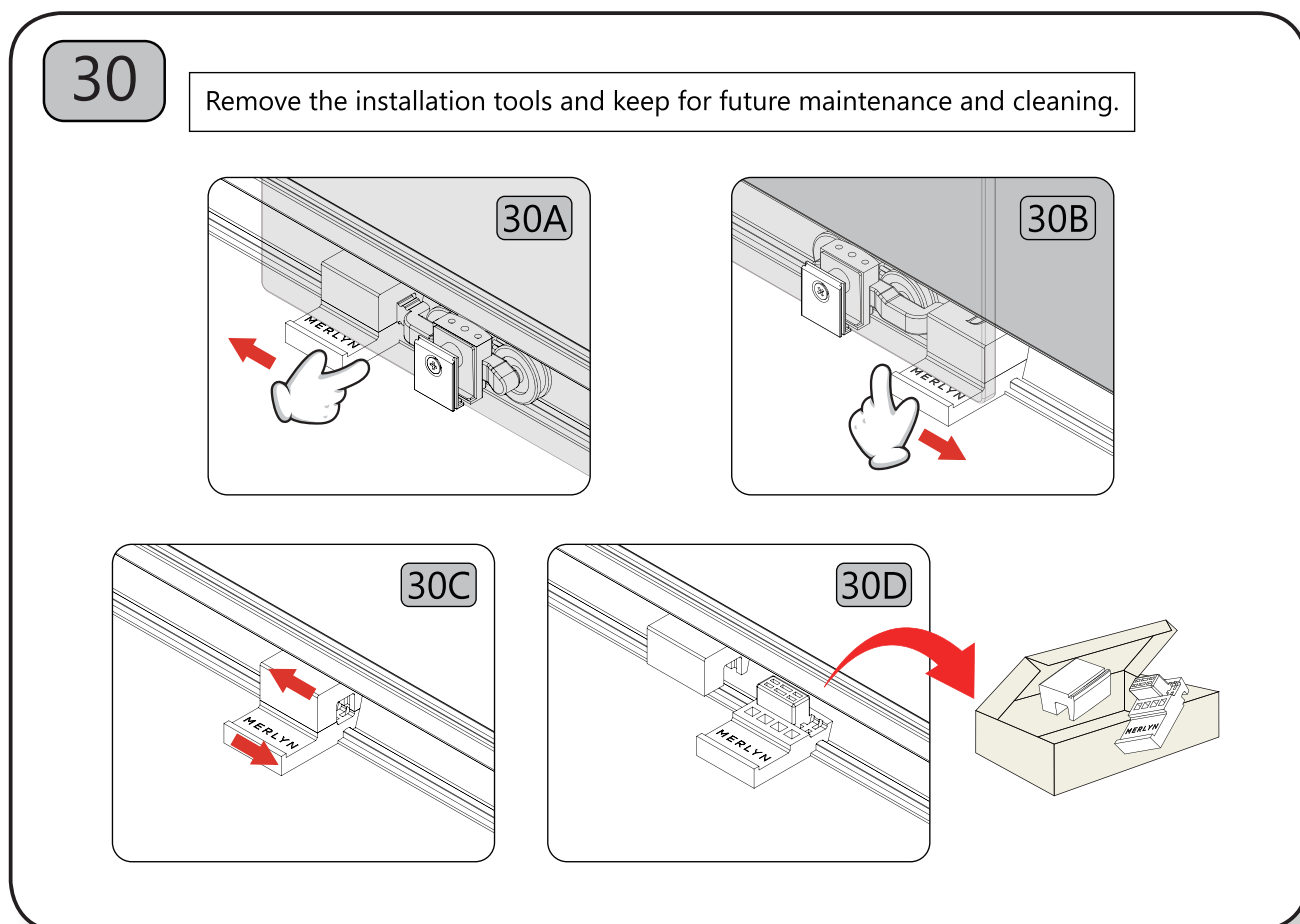
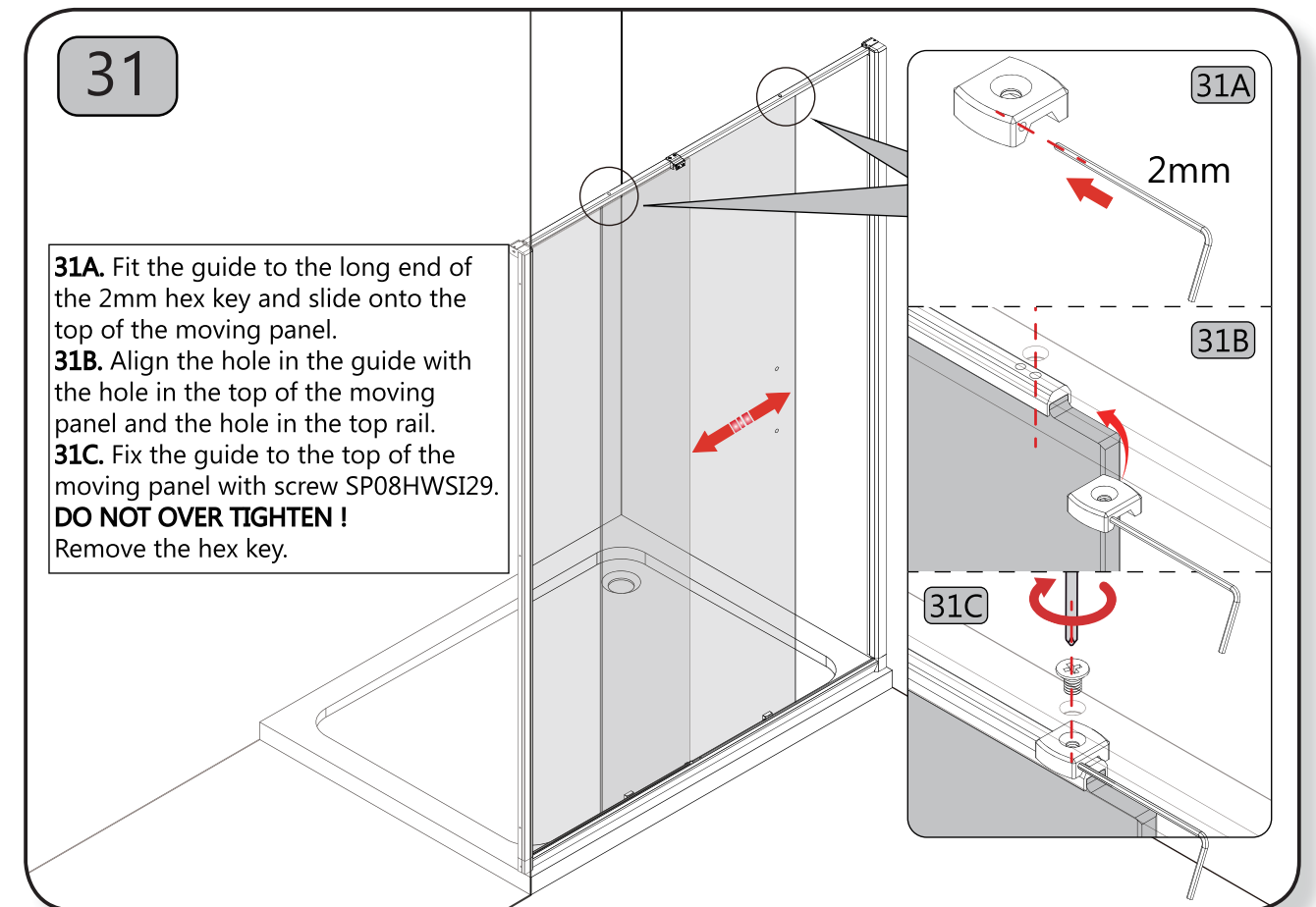
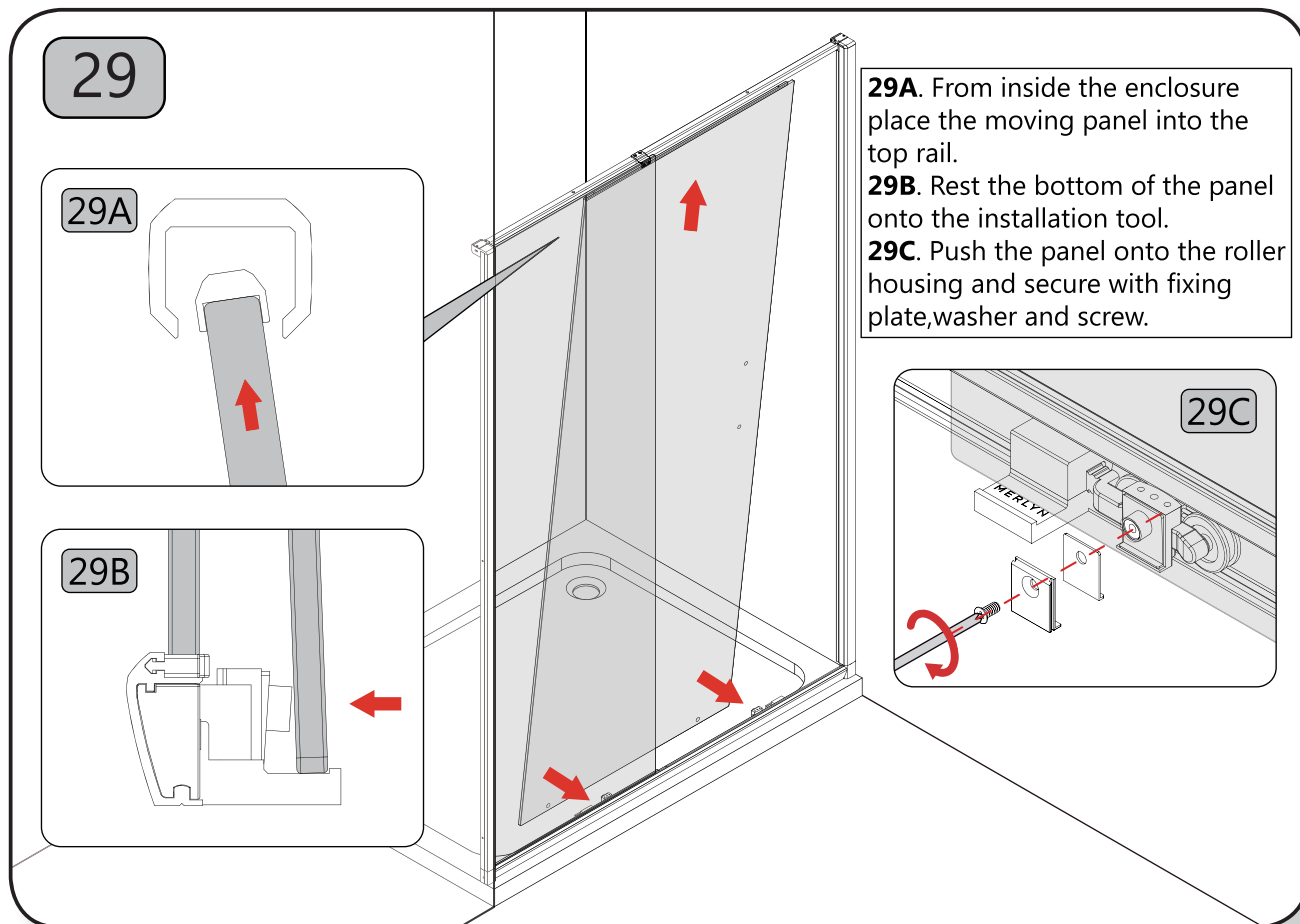
28

Position the installation tools and rollers in the centre of the enclosure. Measure from centre to centre of the rollers and set the distance X according to the product size table.



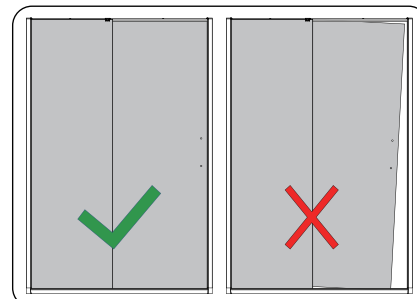
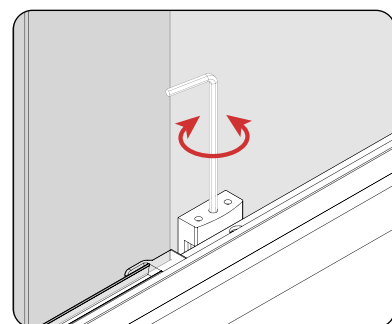
Size	X
1000	311
1100	361
1200	411
1300	461
1400	511
1500	511
1600	511
1700	511





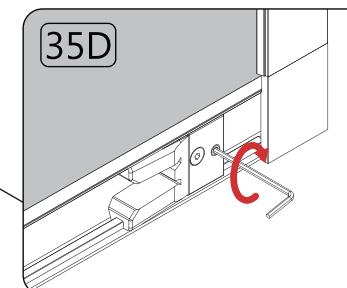
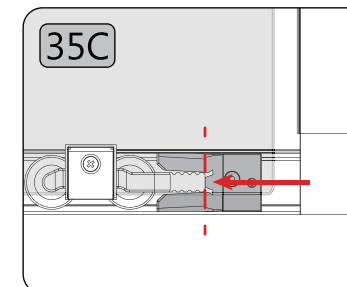
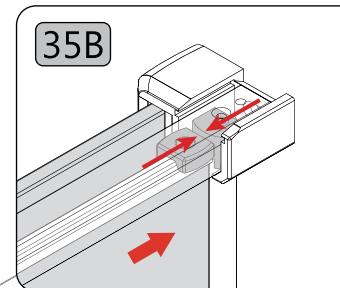
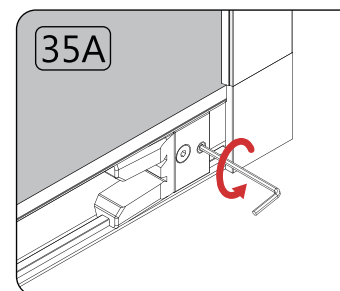
33

Check the overlap between the moving and fixed panels and adjust rollers if necessary.



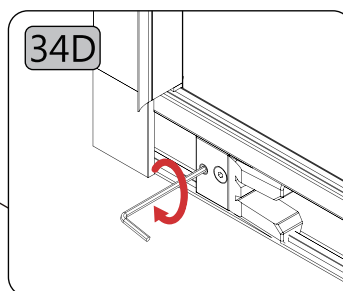
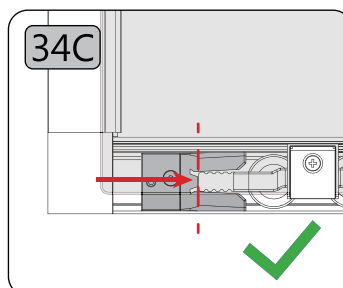
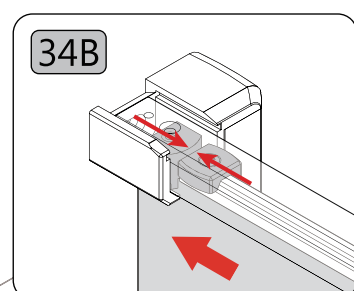
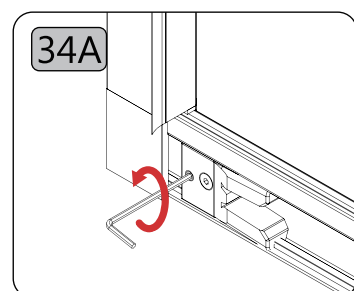
35

**35A.** Loosen small grub screw with the 2mm Hex Key.  
**35B.** Slide the moving to the fully open position making sure it is touching the bump stop in the top rail.  
**35C.** Slide the bottom stop fully onto the roller arm. Make sure the top bump stop is still touching the edge of the moving panel. Hold the roller stop in position, then slide back the moving panel.  
**35D.** Fully tighten the grub screw.

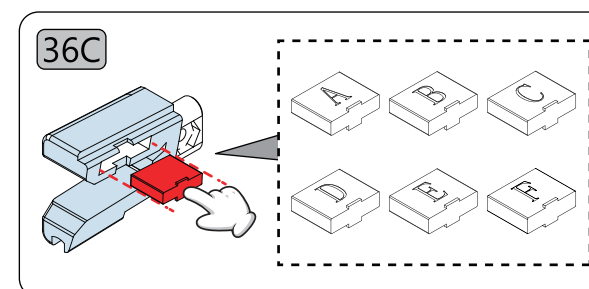
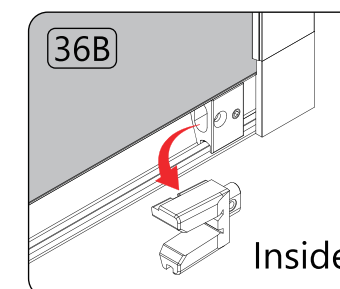
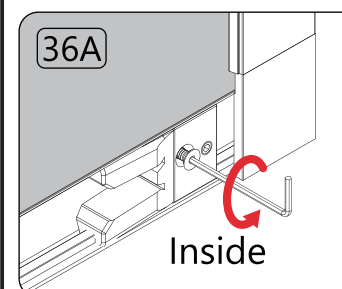


34

**34A.** Loosen small grub screw with the 2mm Hex Key.  
**34B.** Slide the moving to the fully closed position making sure it is touching the bump stop in the top rail.  
**34C.** Slide the bottom stop fully onto the roller arm. Make sure the top bump stop is still touching the edge of the moving panel. Hold the roller stop in position, then slide back the moving panel.  
**34D.** Fully tighten the grub screw.



36



The soft close resistance of this product can be adjusted depending on the users preference and may also need to be adjusted depending on the door size purchased as all doors are fitted as standard to the lowest setting. This can be done simply by replacing the spacer within the soft close block.

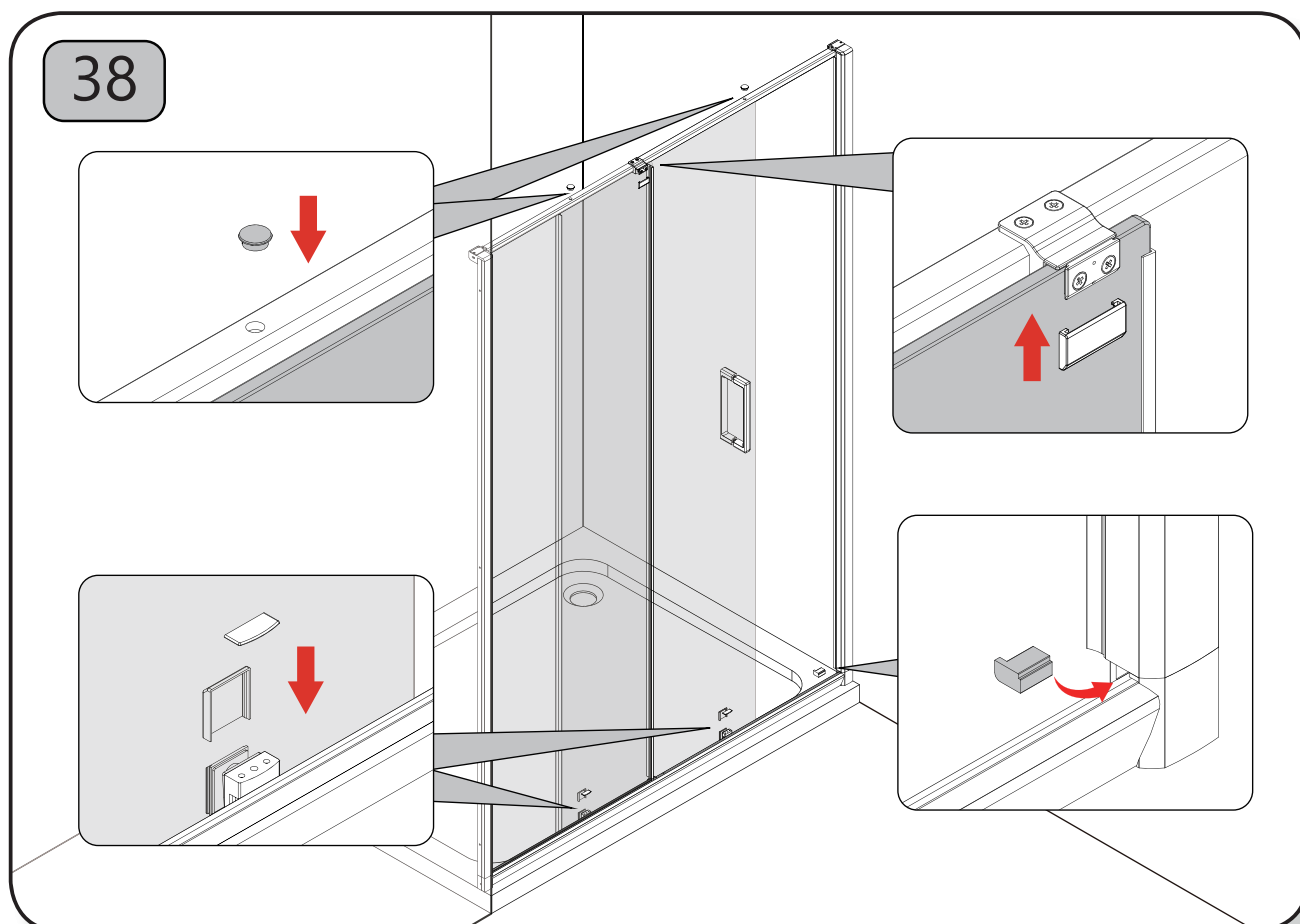
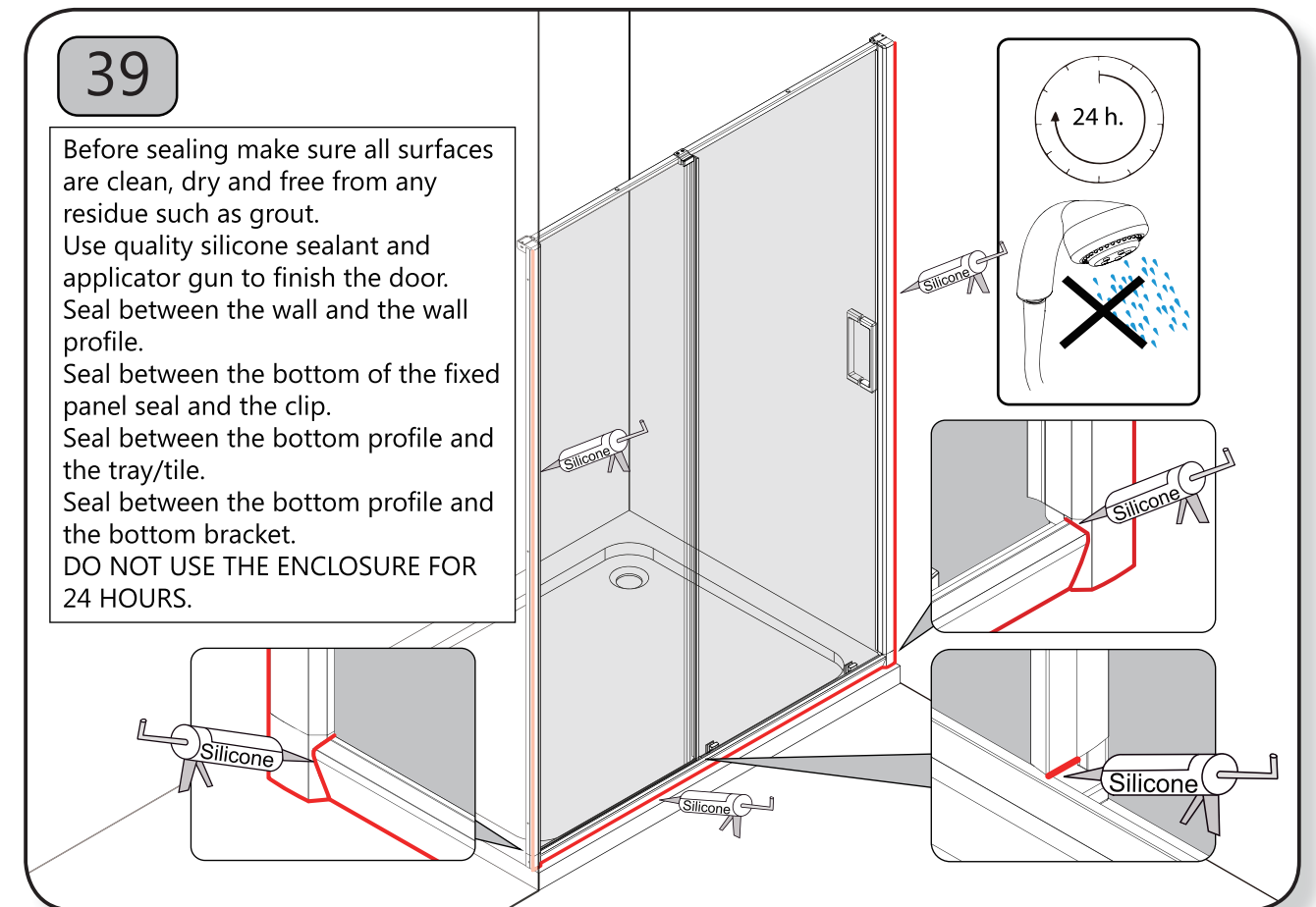
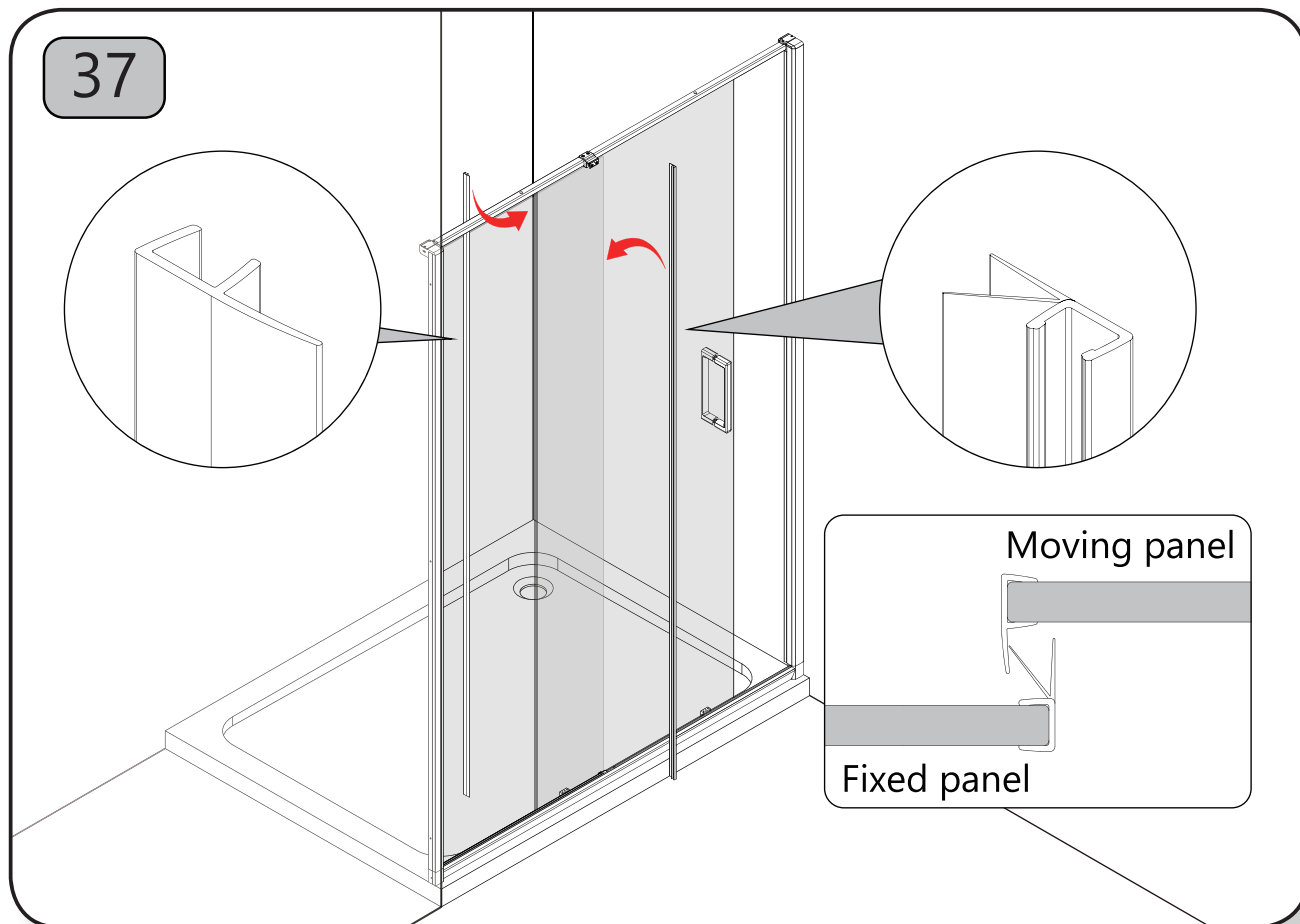
**Note:** The spacer thickness increases from A to F.

**36A.** Remove the countersunk screw.

**36B.** Remove the soft close block.

**36C.** Slide out spacer, replace the spacer and reassemble. Test the function and repeat the process in increments until the desired soft close function is achieved.

**TOP TIP!** To keep the soft close working at its optimum level periodical cleaning of the rubber is advised. Use a damp cloth to wipe the top and bottom surfaces that are in contact with the roller arm.





## **CLEANING**

It is important to clean your Merlyn shower door after every use. Wipe down all the glass and metal parts with a soft cloth. Do not allow lime scale to build up in hard water areas. Ensure that any residual water on the glass is removed after every use.

- Clean the glass regularly using soapy water.
- Do not use abrasive products on any surfaces.

Chrome is vulnerable to acid attack and some strong household cleaners including strong disinfectants, denture cleaners, hair dyes, wine making chemicals and photographic chemicals may contain acid. These materials may have a varying effect on the surface from black spots/streaks (which cannot be removed) to pitting the surface. Contact with these materials should be avoided.

## **TROUBLE SHOOTING**

### **Door Not functioning properly**

1. Is the tray 100% level? ( see step1)
2. Do the finished tile measurements on top middle and bottom fall within the adjustment X listed on step 2.
3. Are the wall profiles stepped in a Min. 10mm from the edge of the tray? ( see step 5)
4. Have the spacers provided been used to fill any gaps between the bottom track and the tray/floor ? The profile must be completely level and supported to ensure the door functions correctly. (see step 6 )
5. Are the edges of the fixed panel and moving panel plumb. Check with a level and adjust if necessary (step 18, 19 &33).
6. Is the top rail loose ? Check the wall bracket fixing plate is properly fastened. (Step 25)
7. Are the screws in the roller housing fully tightened and the rollers seated correctly on the track (step 26 -29)
8. Are the top guides correctly fitted (step 31).
9. Door unstable when hitting the bump stops ? Is the bottom stop in the correct position (step 34-35)
10. Is the correct spacer used in the soft close block ? (see step 36)
11. Have the walls been checked at different levels to ensure consistency? Bumps or hollows in the wall may push the frame out of alignment.

### **Door Leaking**

1. Is the bottom track and fixed panel within the Min. – Max. limit of adjustment. Max. 20mm ? (see step 15)
2. Is the wedge gasket pushed in fully between the fixed/side panel glass and the wall profile. (see step 19)
3. Has the fixed panel been properly secured by the bottom clip? (See step 20)
4. Door not closing fully ? Wipe clean the inner surfaces of the rubber bump stop on the bottom rail. If the door is still not closing fully check the spacer thickness (step 36)
5. Are the upright seals fitted correctly? (see step 37)
6. Is the door sealed correctly ? Ensure a sufficient dab of silicone is applied between fixed clip and glass on bottom profile and upright seal is fitted to fixed panel. Then remove excess silicone. (see step 39)

To download the Declaration of Performance (DOP) for this product  
please use the link below.

<https://merlynshowering.com/aftersales-support/dop-certs/>

For further information please contact: IRL:0567791555 UK:08081011429